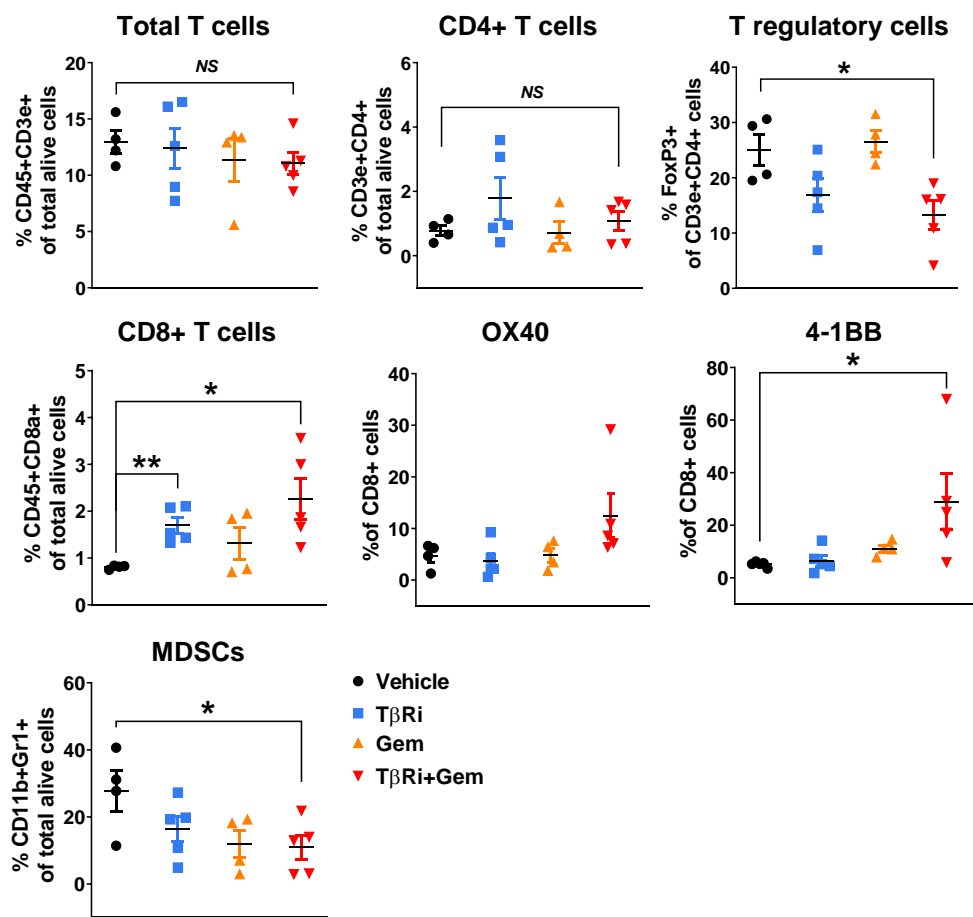
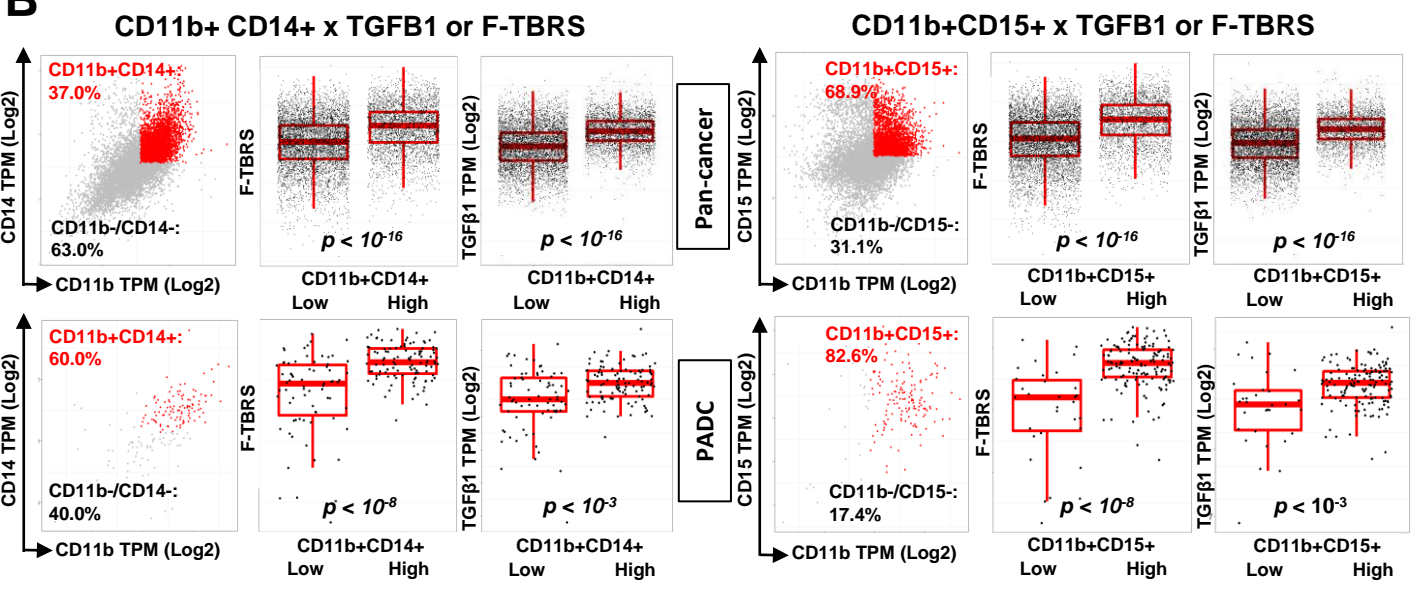


# Suppl. Fig S5

**A**



**B**



**Supplemental Figure S5.** A. Quantification of flow cytometry analysis of indicated immune cell populations in KPC tumors.  $N \geq 4$  per treatment group). **B.** Correlation of TGF $\beta$  response signature gene set (TBRS) and TGF $\beta$ 1 ligand transcripts and human MDSC marker expression CD11b and CD14 (top) and CD11b and CD15 (bottom) (defined as high by mean of all specimens, shown in red) in all cancer and pancreas cancer clinical specimens from TCGA cancer dataset.