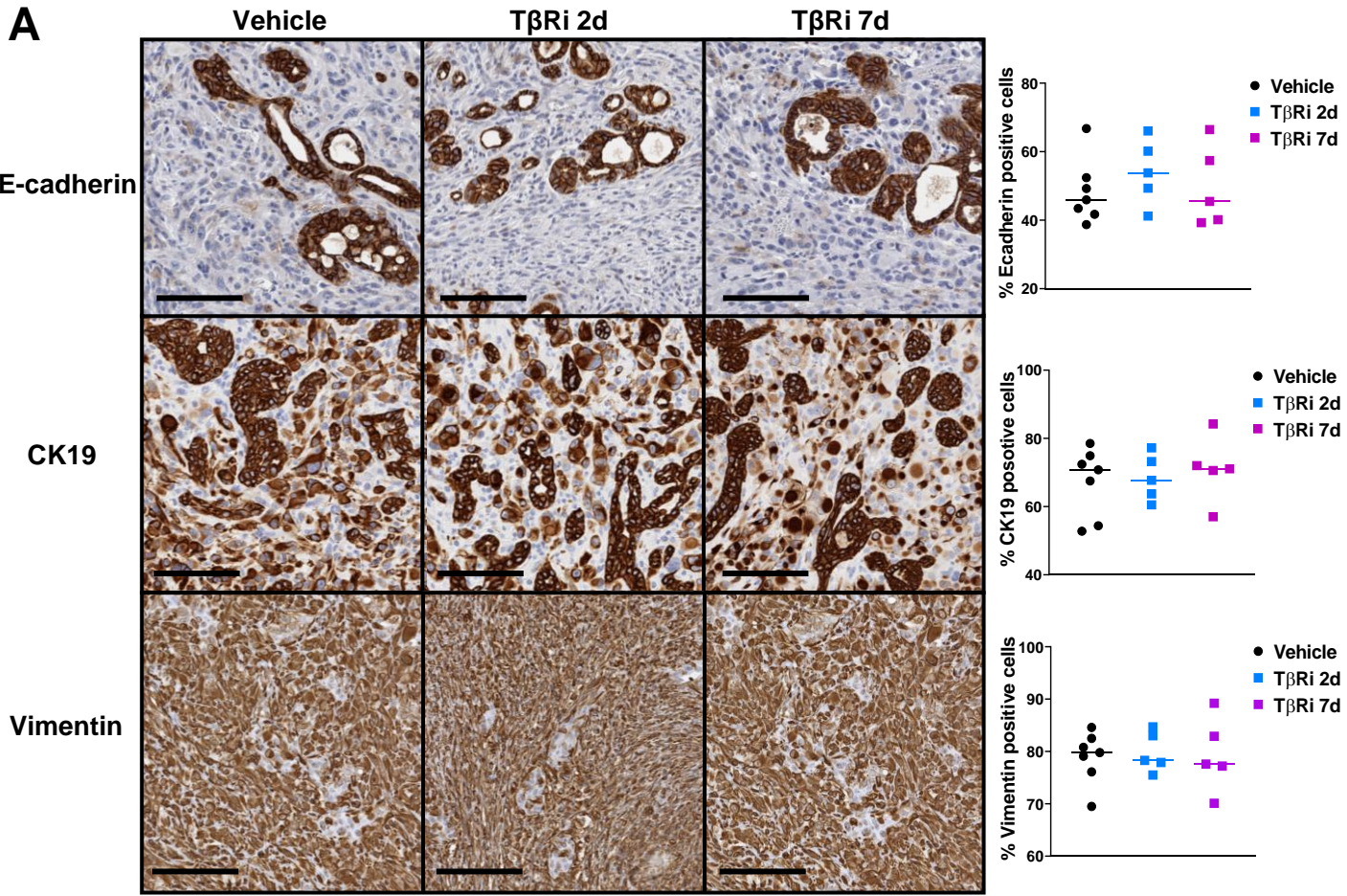
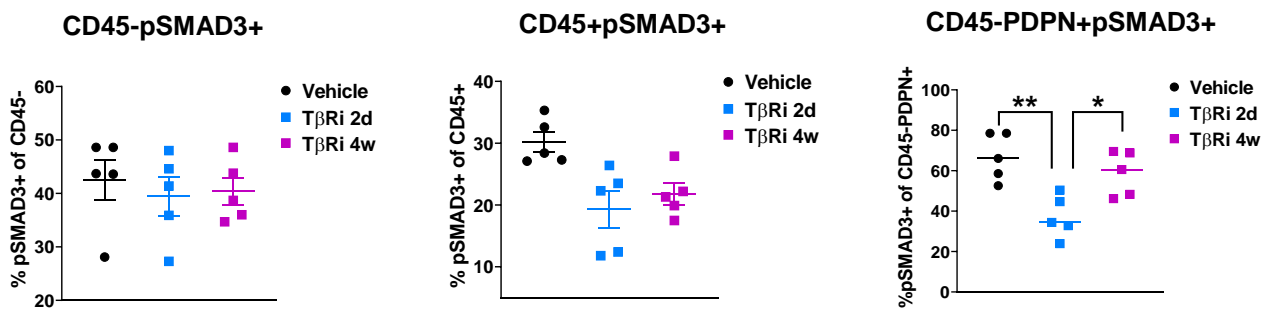


# Suppl. Fig S2

**A**



**B**



**Supplemental Figure S2.** Stromal modulation via T $\beta$ R-I inhibition with LY364947 administered at low dose does not change differentiation state of cancer cells. **A.** Immunohistochemical staining of KP16 tumors (N $\geq$ 4 per group) with indicated EMT markers, quantification of % positive cells shown on right. **B.** T $\beta$ R-I inhibition with LY364947 administered at low dose suppresses stromal SMAD signaling. Quantification of flow cytometry analysis of KPC tumor digests indicating pSMAD3<sup>+</sup> CD45<sup>-</sup> (left), pSMAD3<sup>+</sup> CD45<sup>+</sup> (middle), and CD45<sup>-</sup>-PDPN<sup>+</sup> (right) cell fractions.