

Supplemental Figure 5

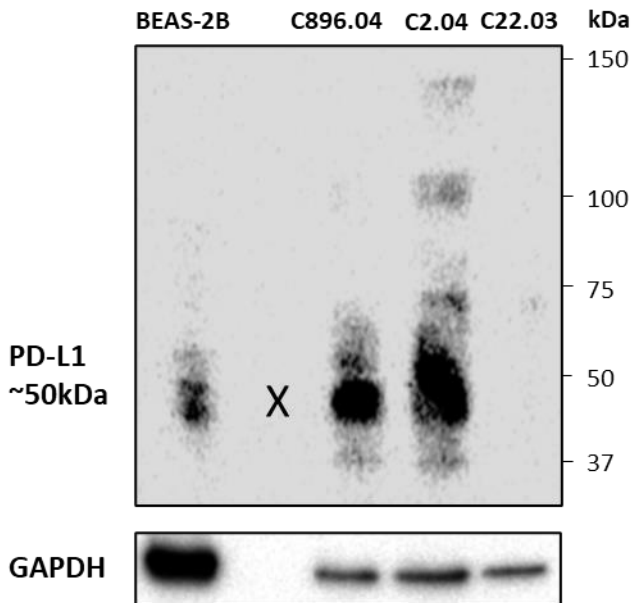


Fig. S5. PD-L1 expression in murine NE SCLC cells. Protein expression level of PD-L1 (Thermo Fisher Scientific) was tested by western blot in BEAS-2B (human lung epithelial cell line) and murine SCLC cells derived from Rb and Trp53 deficient mice as previously described (1). Protein level of PD-L1 was high in SCLC NE murine cell lines (C896.04 and C2.04) compared to BEAS-2B and SCLC Non-NE murine cell line (C22.03).

Reference:

1. Calbo J, van Montfort E, Proost N, van Drunen E, Beverloo HB, Meuwissen R, Berns A. A functional role for tumor cell heterogeneity in a mouse model of small cell lung cancer. *Cancer Cell*. 2011 Feb 15;19(2):244-56.

Acknowledgement: We would like to acknowledge Dr. Anton Berns's group for the kind gift of murine SCLC C2.04 and C22.03 cell lines for the study.