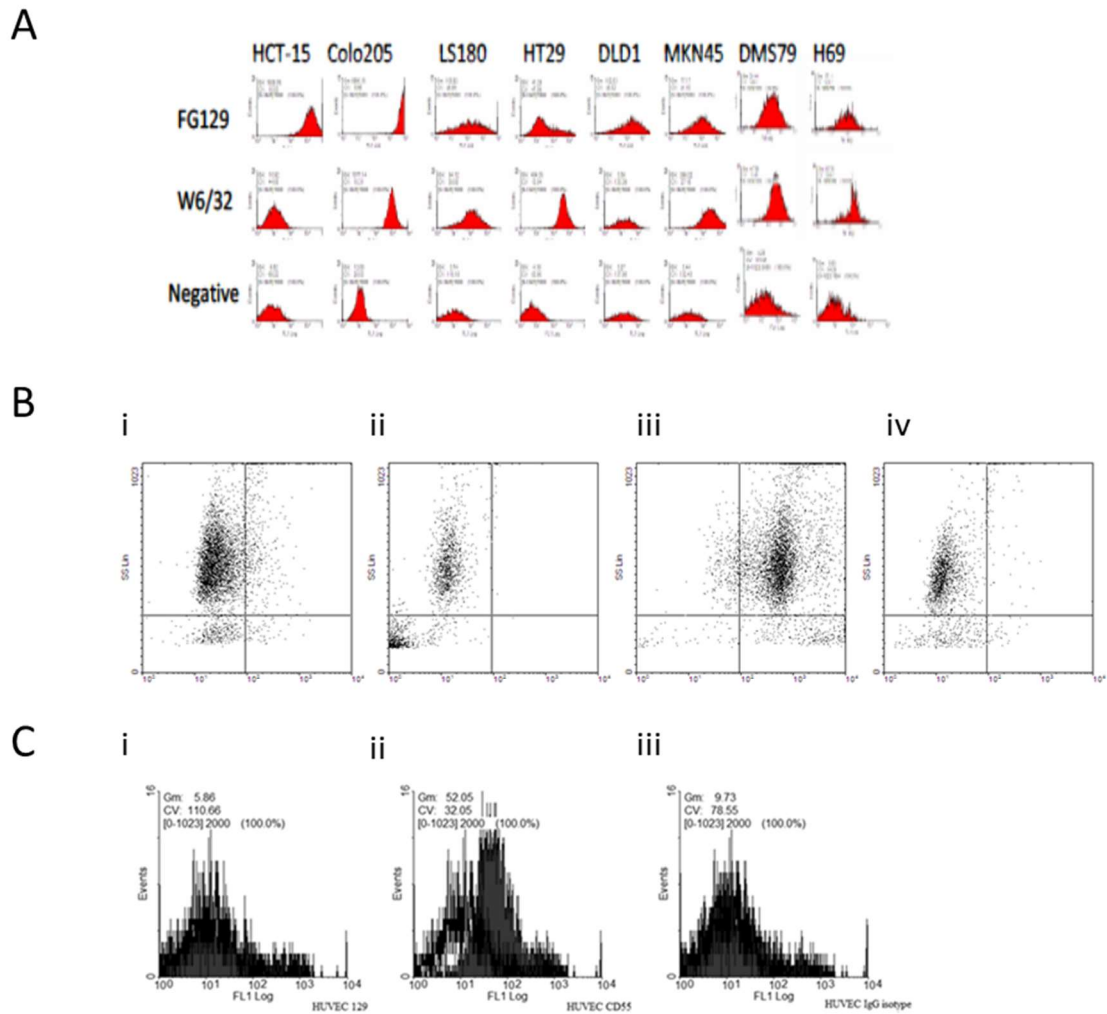


Figure S1. FG129 binds to an extended panel of cancer cell lines, but does not target normal human PBMCs (granulocytes and lymphocytes) nor does it bind normal human endothelial cells (HUVEC)



A. Flow cytometry histograms of FG129 binding to a subset of antigen positive tumor cell lines. W6/32 (anti-HLA-A, B, C) was used as positive control. Negative controls consisted of the omission of the primary antibody. **B.** Indirect immunofluorescence and flow cytometric analysis of whole blood binding with FG129 (i); CH129 (ii); W6/32 (anti-HLA-A, B, C) (iii) and mouse IgG1 isotype (iv). **C.** Indirect immunofluorescence and flow cytometric analysis of human umbilical vein endothelial cells (HUVECs). FG129 (i), anti-CD55 mAb (ii) was used as a positive control and mouse IgG1 isotype (iii) as a negative control.