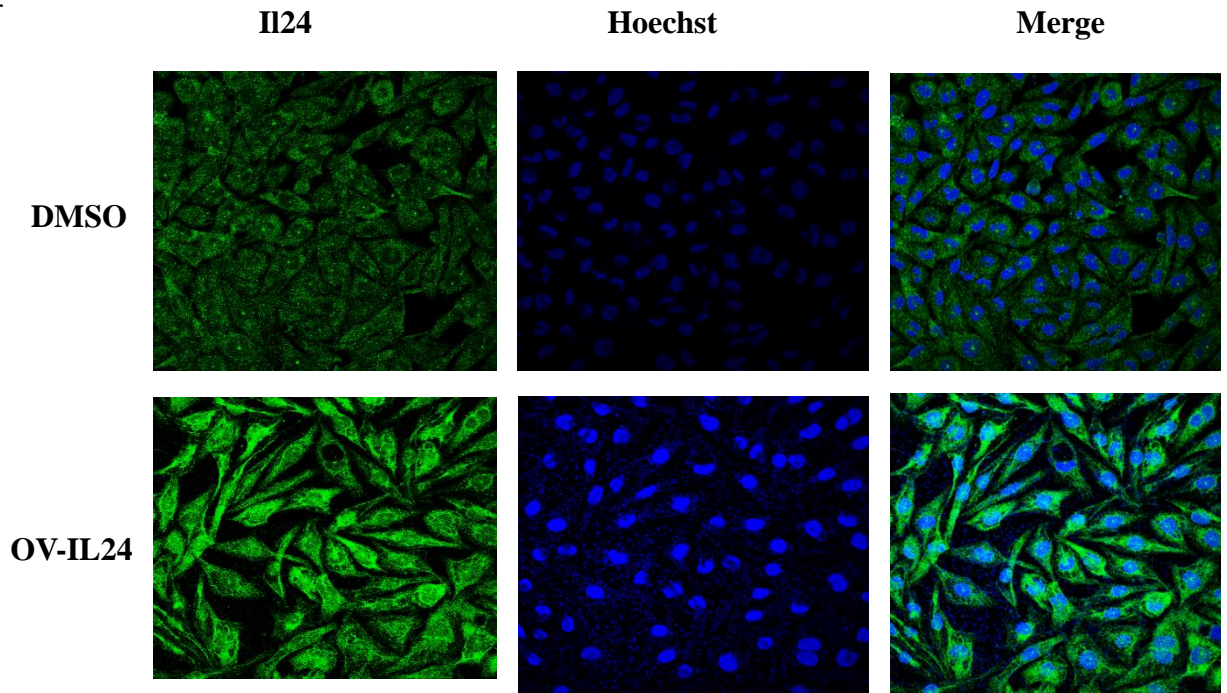
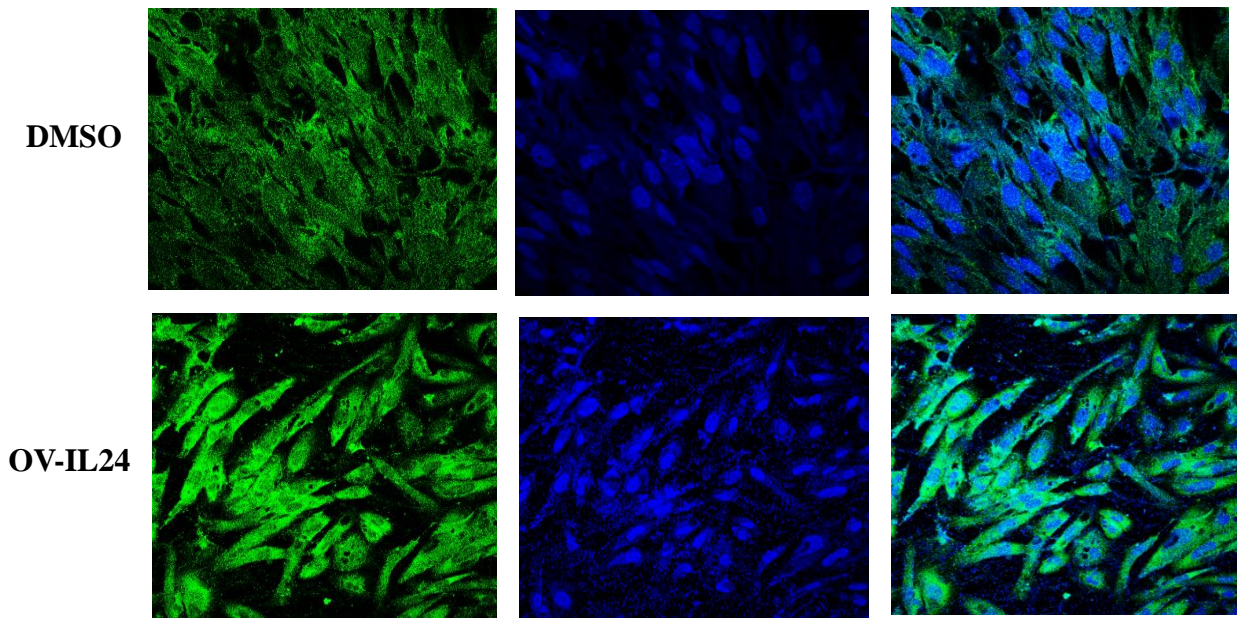


## Supplemental Figure 2

### Rh30



### Rh18



**Supplemental Figure 2.** Cells were transfected with pCMV6-IL-24 and fixed with 4% paraformaldehyde in PBS. Cells were then blocked and incubated with IL-24 antibody followed by incubation with Alexa Fluor conjugated secondary antibody, then cells were observed using a Zeiss confocal fluorescence microscope.