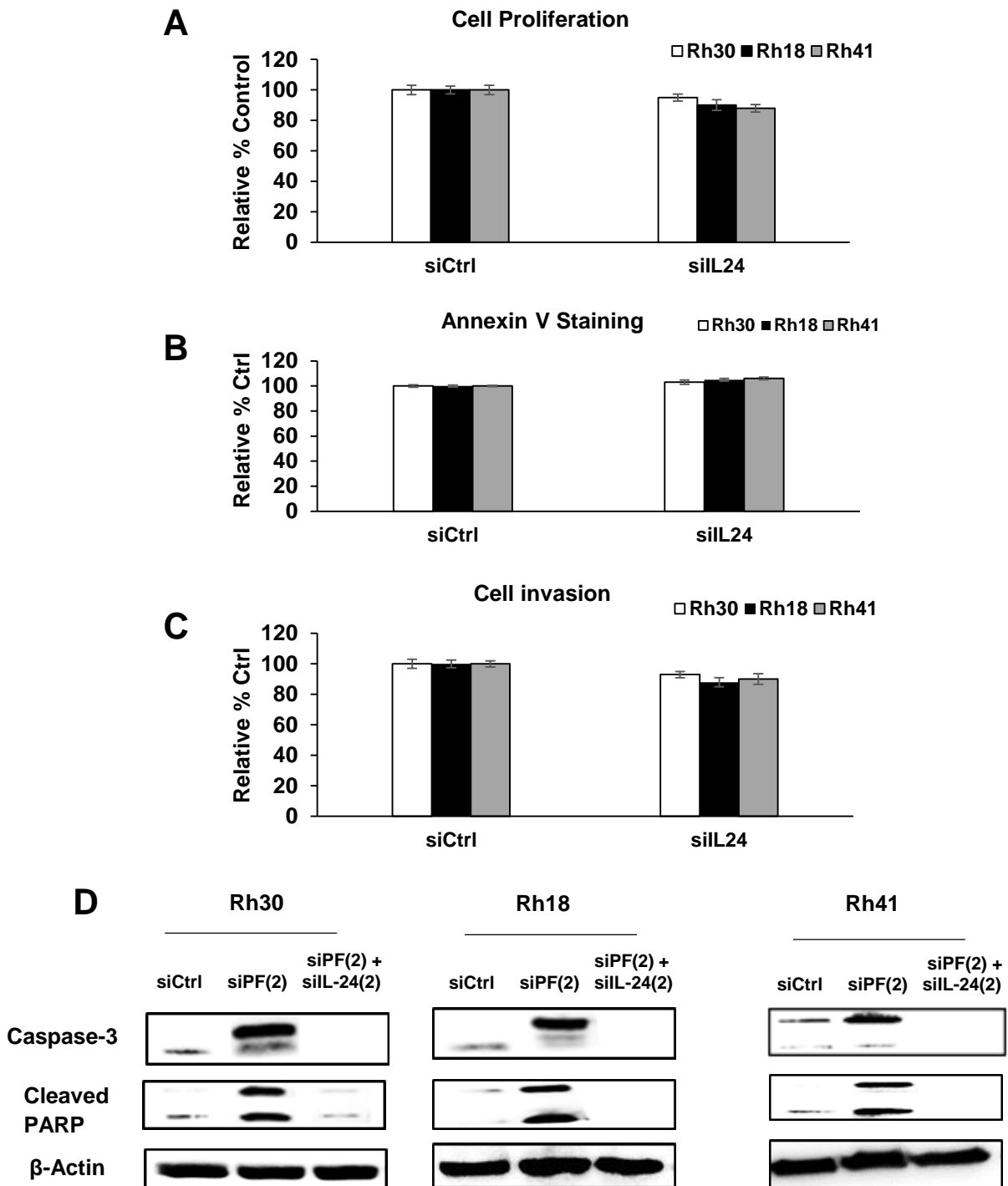


Supplemental Figure 3



Supplemental Figure 3. Transfection of ARMS cells with siL24 has minimal effects on cell (A) proliferation, (B) Annexin V staining and (C) invasion. (D) A second set of PF and IL-24 oligonucleotides were used to show that siPF (2) and siL-24 gave results similar to that observed in Figure 6D.