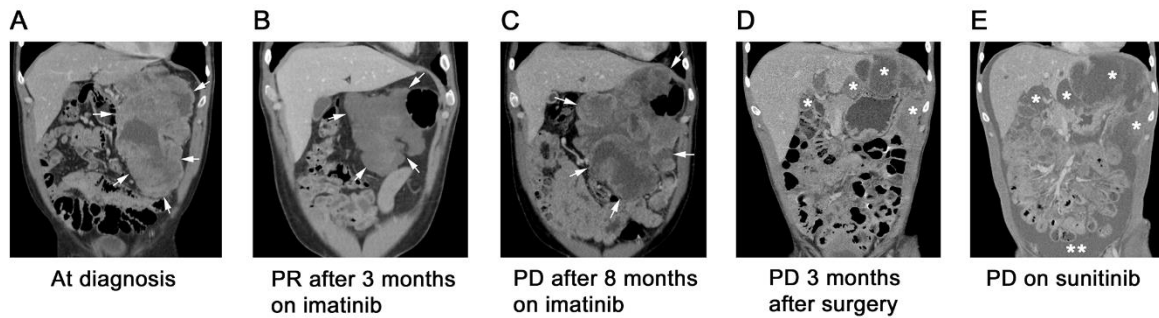
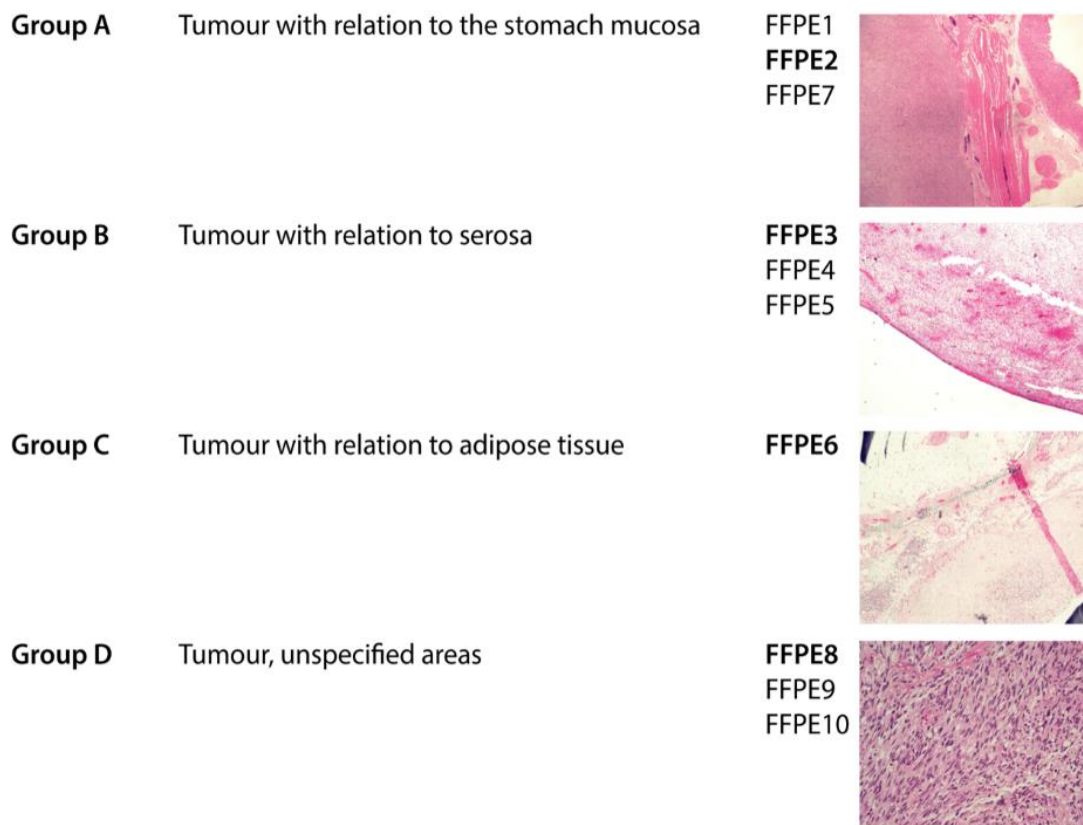


## Supplementary Figures



**Supplementary Figure 1. Radiological evaluation of response to treatment.** Representative coronal CT images from patient #50 at selected time points during treatment. **A.** At diagnosis prior to start of imatinib. **B.** Radiological partial response (PR) after three months of imatinib treatment. **C.** Progressive disease (PD) 8 months after starting imatinib. **D.** Progressive disease with peritoneal metastases (white asterisks) three months after surgery. **E.** Progressive disease on first evaluation after start of sunitinib, with an increase in size of peritoneal metastases (white asterisks) and ascites (double white asterisk). White arrows delineate the primary tumour in A-C.



**Supplementary Figure 2. Histological grouping of FFPE sections according to normal tissue.** The FFPE sections from the case patient #50 were haematoxylin and eosin stained, and grouped according to anatomical features showing the location related to normal tissue. A representative part of a FFPE block (in bold) is shown for each of the groups.