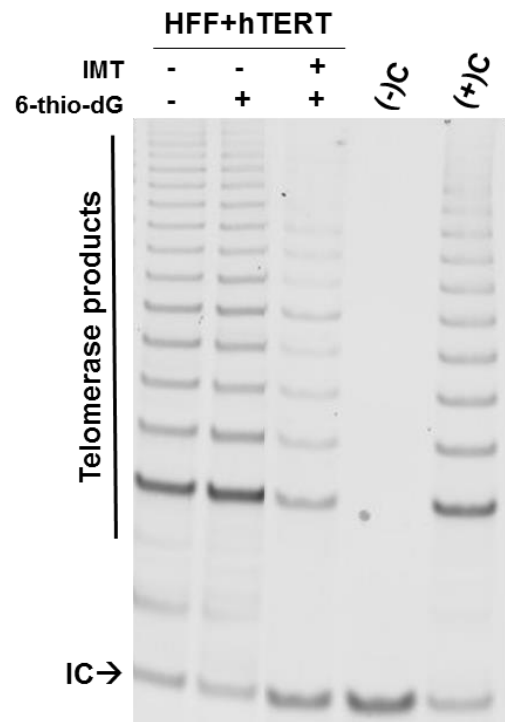
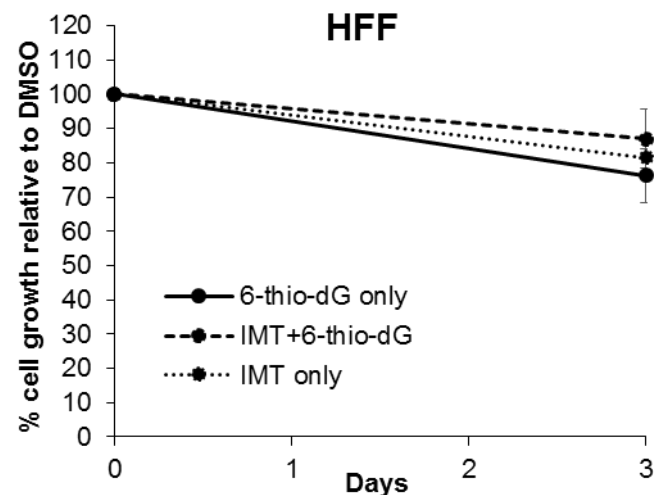


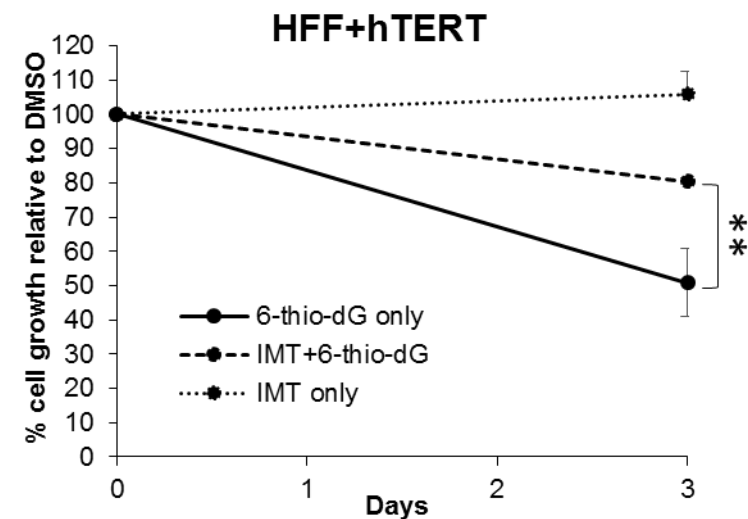
A



B



C



D

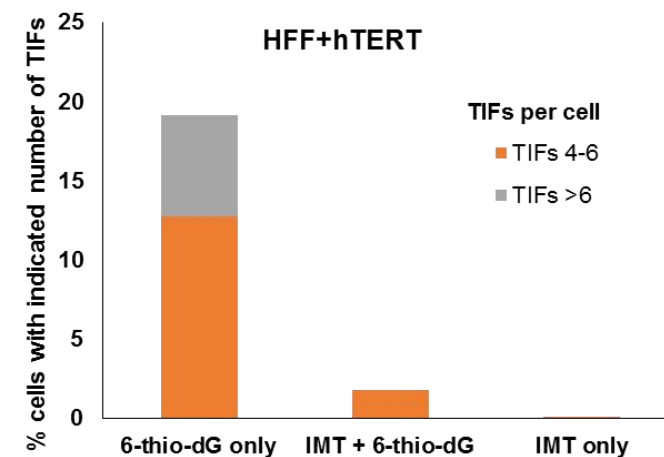


Figure S2. **A**, Telomerase activity in HFF+hTERT cells treated with DMSO, 6-thio-dG (3 μ M for 3 days), and imetelstat (IMT; 2 μ M). For combination treatment, cells were pre-treated with IMT for 3 days and then with 6-thio-dG for another 3 days. (-) C, (+) C, and IC indicate negative control, positive control, and internal control respectively. Telomerase products are indicated. **B-C**, effect of telomerase inhibition on cell growth of HFF (B) and HFF+hTERT (C) cells treated with imetelstat (IMT; 2 μ M) only, 6-thio-dG (3 μ M) only, or 6-thio-dG in combination with imetelstat as described in **A**. Error bars represent the standard deviation generated from triplicates. *P*-value, **, *P*<0.01. **D**, quantification showing percent cells with TIFs in HFF+hTERT cells treated with imetelstat (IMT; 2 μ M) only, 6-thio-dG (3 μ M for 3 days), or in combination with imetelstat as described in **A**. Cells counted for each treatment (*n*= ~50 cells). Bottom panels show representative images showing TRF2 (green), γ H2AX (red), and TIFs (yellow) indicated by white arrows. DAPI (blue) indicates nucleus staining.

