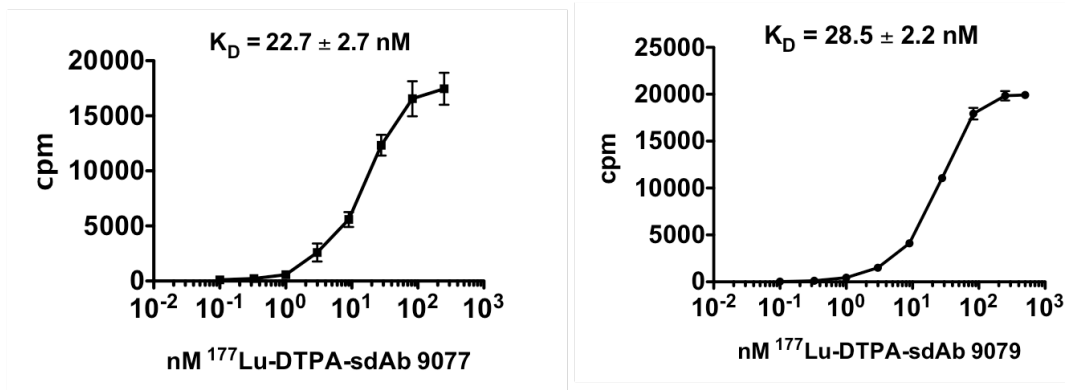
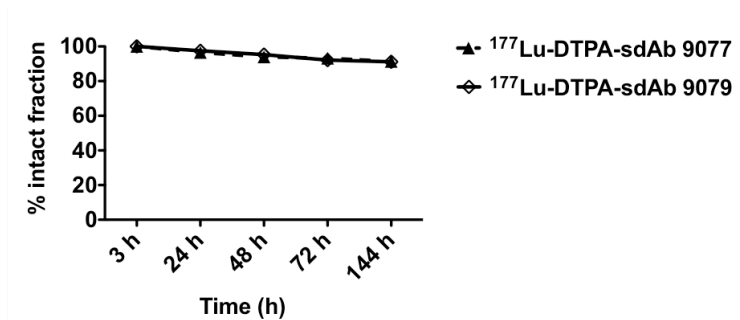


A**B**

Supplemental Figure S2. A) Affinity of ^{177}Lu -DTPA-sdAb 9077 and ^{177}Lu -DTPA-sdAb 9079 towards hCD20 receptor was calculated by incubating serial dilutions with hCD20^{pos} B16 cells. The calculated K_D values of 22.7 ± 2.7 nM and 28.5 ± 2.2 nM for ^{177}Lu -DTPA-anti-hCD20 sdAbs 9077 and 9079, respectively, were obtained. **B)** Stability of ^{177}Lu -DTPA-sdAb 9077 and ^{177}Lu -DTPA-sdAb 9079 in human serum at 37 °C. Both ^{177}Lu -radiolabeled anti-hCD20 sdAbs showed > 91 % intact complexes after 144 h incubation.