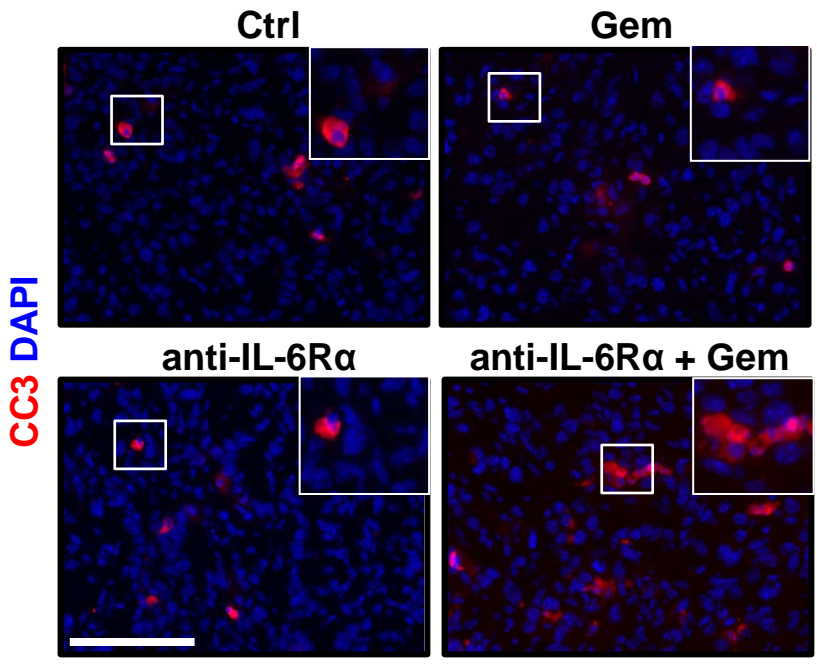


Supplemental Figure 8



Supplemental Figure 8. Cleaved caspase 3 (CC3) expression in tumors treated with or without IL-6Ralpha antibodies and gemcitabine chemotherapy. Shown are representative immunofluorescence images showing CC3 (red) expression in PDAC tumors treated as described in Figure 5f. Nuclei are stained with DAPI (blue).