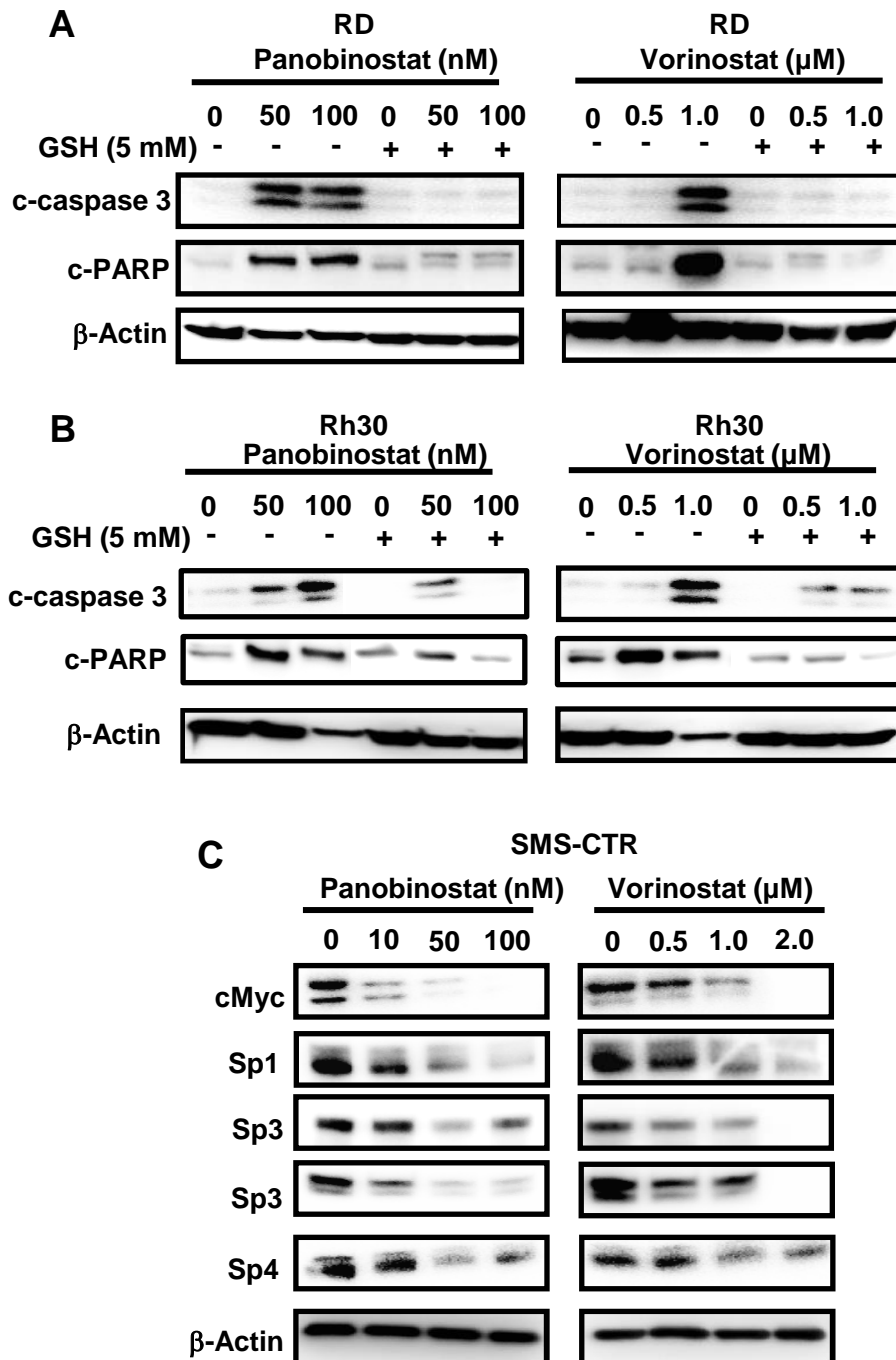


Supplemental Figure S1



Supplemental Figure S1. HDAC inhibitors induce apoptosis and decrease Sp proteins. RD (A) and Rh30 (B) cells were treated with HDAC inhibitors alone or in combination with GSH for 24 hr, and whole cell lysates were analyzed by western blots. (C) SMS-CTR cells were treated with HDAC inhibitors for 24 hr, and whole cell lysates were analyzed by western blots.