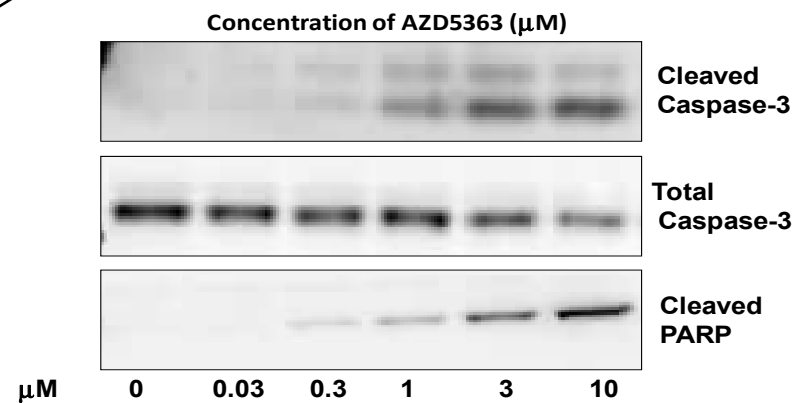


Supplementary Fig. S4

A

Cell line	Tumour type	MTS assay GI50	Sytox Green assay GI50	Sytox Green assay- Significant cell death at 1 μ M?
BT474c	Breast	0.08	0.40	Yes
CAMA-1	Breast	0.08	0.32	No
T47D	Breast	0.19	0.28	No
HCC1187	Breast	0.23	0.26	No
HCC1419	Breast	0.81	3.2	No
MDA-MB-468	Breast	0.83	1.3	No
BT-20	Breast	1.3	2.0	No
MDA-MB-453	Breast	1.4	2.5	No
MCF-7	Breast	1.6	1.9	No
HCC-1954	Breast	1.7	2.3	No
BT-549	Breast	21	6.3	No
LNCaP	Prostate	0.05	0.10	Yes
PC346CFlut1	Prostate	0.07	0.18	Yes
DU-145	Prostate	>10	>30	No

BT474c HER2+ Breast:



B

