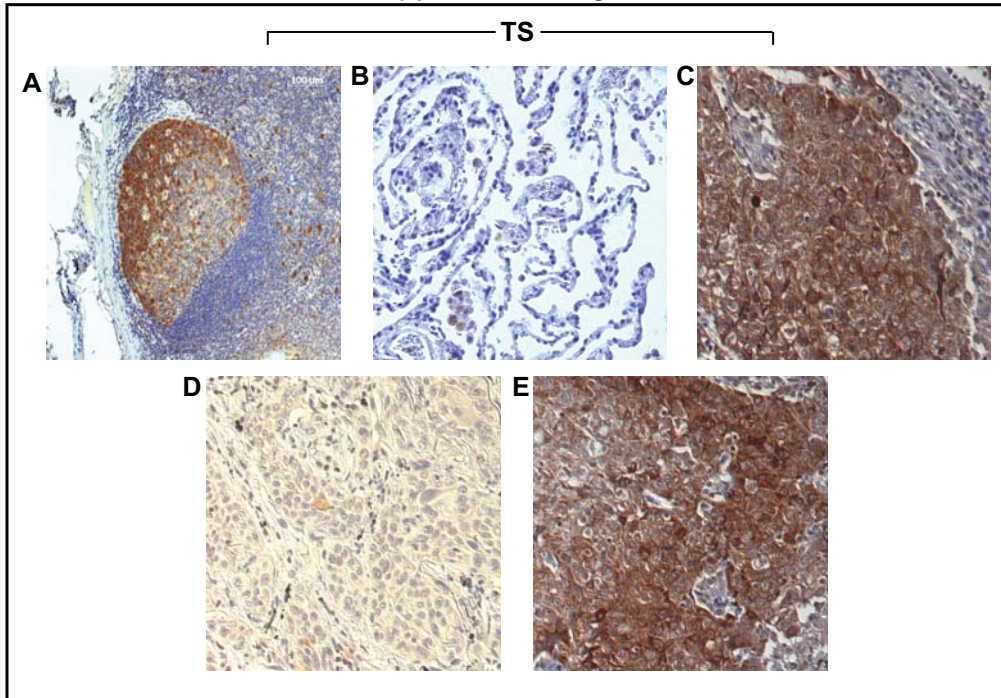


Supplemental Figure 2



Supplemental Figure 2. Representative images showing the immunohistochemical staining of TS with a polyclonal antibody. Specimens were routinely processed and stained as described in Materials and Methods. **A.** TS expression in replicating cells of the human palatine tonsil germinal center (positive control; $\times 40$). **B.** TS immunostaining in normal lung tissue: pneumocytes stained negative in alveolar tissue. **C.** TS overexpression in NSCLC with nearby normal stromal cells (top right) staining negative ($\times 200$). **D.** A NSCLC specimen showing low TS expression ($\times 100$; IHC score: 5). **E.** NSCLC specimen demonstrating overexpression of TS ($\times 100$; IHC score: 285).