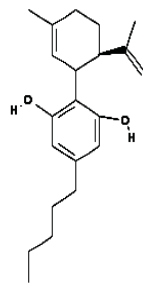
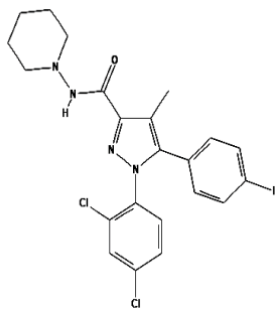


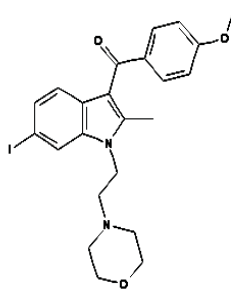
Supplementary Figure S1



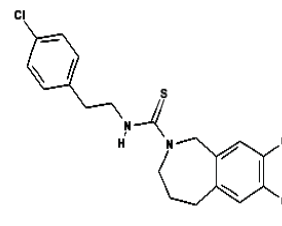
CBD



AM251

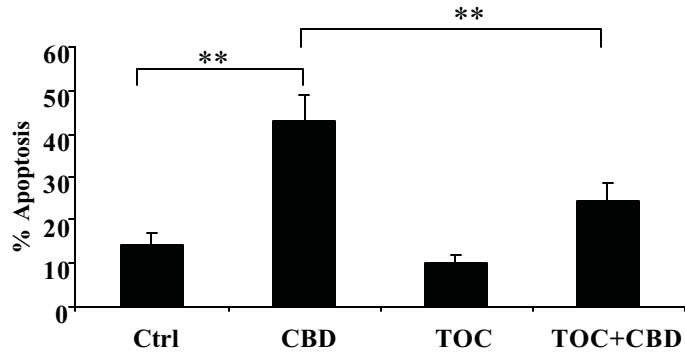


AM651



Capsazepine

Supplementary Figure S2



MDA-MB-231 cells were treated with CBD (5 μ M) in the presence or absence of α -Tocopherol (TOC). Cells were analyzed for Annexin V positivity by flow cytometry. Data represent the mean \pm SD of at least 3 independent experiments. (**p = 0.01).