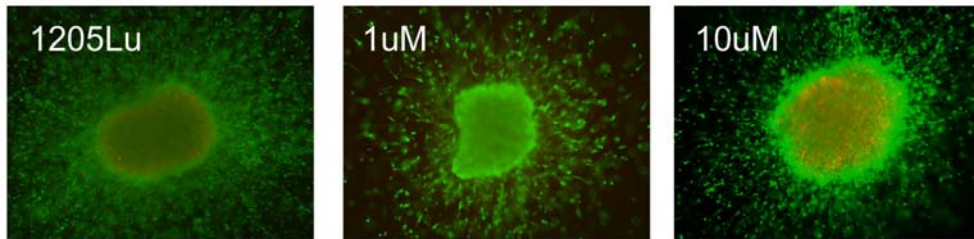
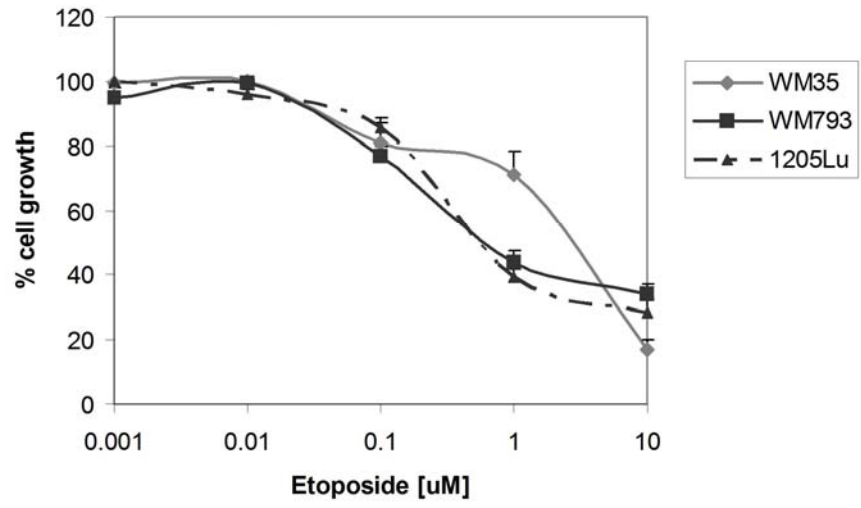


Supplementary Figure 4: Melanoma cells are more resistant to paclitaxel in 3D

culture. **A.** Etoposide reduces melanoma growth in adherent culture. Cells were treated with increasing concentrations of paclitaxel (0.001-10 μ M) for 72 hours before being treated with cell proliferation reagent WST-1 (Roche). The resulting changes in absorbance were read in a plate-reader at 480nm and expressed as a percentage of control absorbance. **B.** 1205Lu cells were grown under non-adherent conditions for 72 hours until spheroids had formed. Spheroids were then harvested and implanted into a collagen gel before being treated with paclitaxel (100nM and 1 μ M). After 72 hours cells were treated with the cell viability kit, where living cells stain green and dead cells red. Magnification X 10.



Supplementary Figure 4: