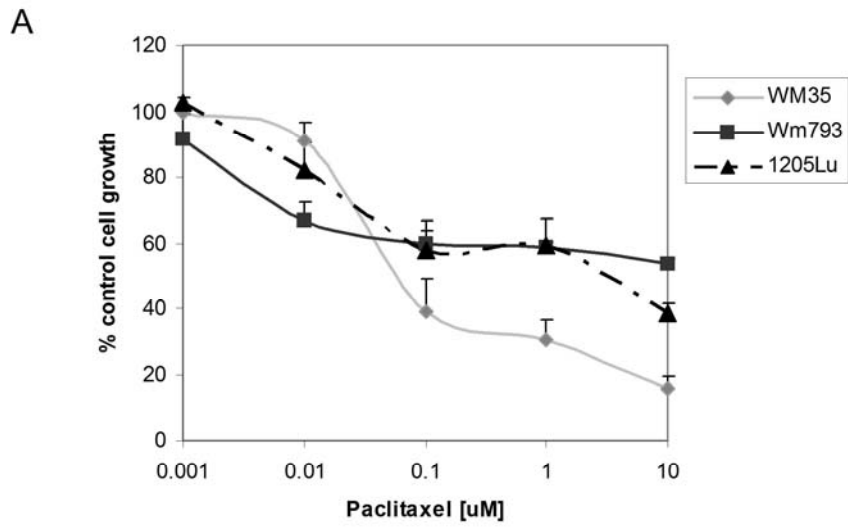
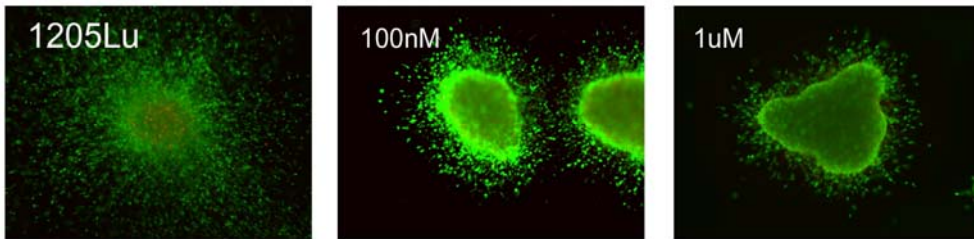


Supplementary Figure 3: Melanoma cells are more resistant to etoposide in 3D

culture. **A.** Etoposide reduces melanoma growth in adherent culture. Cells were treated with increasing concentrations of Etoposide (0.001-20 μM) for 72 hours before being treated with cell proliferation reagent WST-1 (Roche). The resulting changes in absorbance were read in a plate-reader at 480nm and expressed as a percentage of control absorbance. **B.** 1205Lu cells were grown under non-adherent conditions for 72 hours until spheroids had formed. Spheroids were then harvested and implanted into a collagen gel before being treated with Etoposide (1 and 10 μM). After 72 hours cells were treated with the cell viability kit, where living cells stain green and dead cells red. Magnification X 10.



B



Supplemental figure 3: