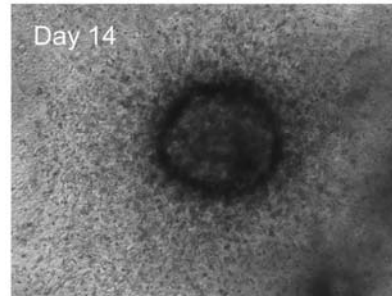
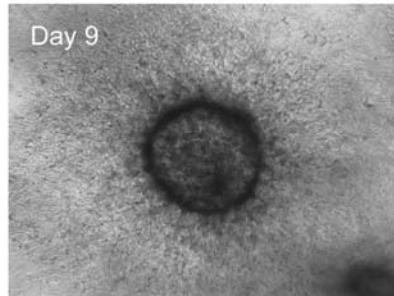
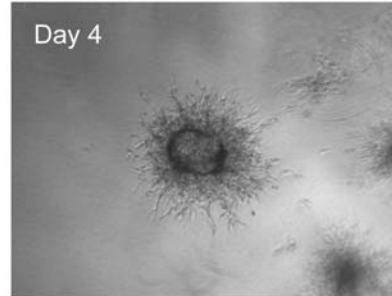
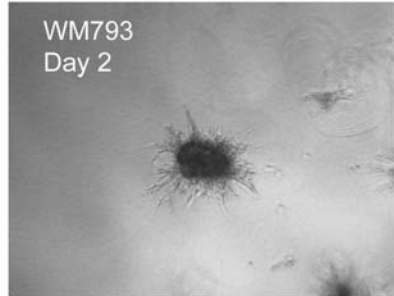


**Supplementary Figure 1: Growth and invasion of WM793 spheroids into the collagen gel.** WM793 melanoma cells were grown under non-adherent conditions for 72 hours before being implanted into collagen. Melanoma media was overlaid on the collagen and the spheroids were left to grow and invade. Microscope pictures were taken at 2, 4, 9 and 14 days. Magnification X 4.



Supplemental figure 1: