

## Highlights of This Issue 1473

## REVIEW

- 1475** **DUBbing Down Translation: The Functional Interaction of Deubiquitinases with the Translational Machinery**  
Bandish B. Kapadia and Ronald B. Gartenhaus

## SMALL MOLECULE THERAPEUTICS

- 1484** **Structural and Functional Analyses of an Allosteric EYA2 Phosphatase Inhibitor That Has On-Target Effects in Human Lung Cancer Cells**  
Jothi Anantharajan, Hengbo Zhou, Lingdi Zhang, Taylor Hotz, Melanie Y. Vincent, Melanie A. Blevins, Anna E. Jansson, John Wee Liang Kuan, Elizabeth Yihui Ng, Yee Khoon Yeo, Nithya Baburajendran, Grace Lin, Alvin W. Hung, Joma Joy, Samarjit Patnaik, Juan Marugan, Pratyaydipta Rudra, Debashis Ghosh, Jeffrey Hill, Thomas H. Keller, Rui Zhao, Heide L. Ford, and CongBao Kang
- 1497** **Encapsulation of Temozolomide in a Calixarene Nanocapsule Improves Its Stability and Enhances Its Therapeutic Efficacy against Glioblastoma**  
Alexander Renziehausen, Antonis D. Tsailanis, Richard Perryman, Evgenios K. Stylos, Christos Chatzigiannis, Kevin O'Neill, Timothy Crook, Andreas G. Tzacos, and Nelofer Syed
- 1506** **Phenotype-Based Screens with Conformation-Specific Inhibitors Reveal p38 Gamma and Delta as Targets for HCC Polypharmacology**  
Jia Xin Yu, Amanda J. Craig, Mary E. Duffy, Carlos Villacorta-Martín, Verónica Miguela, Marina Ruiz de Galarreta, Alexander P. Scopton, Lisa Silber, Andres Y. Maldonado, Alexander Rialdi, Ernesto Guccione, Amaia Lujambio, Augusto Villanueva, and Arvin C. Dar
- 1520** **Cyclin-Dependent Kinase-9 Is a Therapeutic Target in MYC-Expressing Diffuse Large B-Cell Lymphoma**  
Taylor Hashiguchi, Nur Bruss, Scott Best, Vi Lam, Olga Danilova, Cody J. Paiva, Joelle Wolf, Erin W. Gilbert, Craig Y. Okada, Prabhjot Kaur, Lisa Drew, Justin Cidado, Peter Hurlin, and Alexey V. Danilov

## LARGE MOLECULE THERAPEUTICS

- 1533** **MEN1309/OBT076, a First-In-Class Antibody-Drug Conjugate Targeting CD205 in Solid Tumors**  
Giuseppe Merlino, Alessio Fiascarelli, Mario Bigioni, Alessandro Bressan, Corrado Carrisi, Daniela Bellarosa, Massimiliano Salerno, Rossana Bugianesi, Rosanna Manno, Cristina Bernadó Morales, Joaquin Arribas, Rachel L. Dusek, James E. Ackroyd, Phuoc Huy Pham, Rahel Awdew, Dee Aud, Michael Trang, Carmel M. Lynch, Jonathan Terrett, Keith E. Wilson, Christian Rohlf, Stefano Manzini, Andrea Pellacani, and Monica Binaschi
- 1544** **Antibody-Based Delivery of Cytokine Payloads to Carbonic Anhydrase IX Leads to Cancer Cures in Immunocompetent Tumor-Bearing Mice**  
Barbara Ziffels, Marco Stringhini, Philipp Probst, Tim Fugmann, Theo Sturm, and Dario Neri
- 1555** **Anti-GPRC5D/CD3 Bispecific T-Cell-Redirecting Antibody for the Treatment of Multiple Myeloma**  
Tatsushi Kodama, Yu Kochi, Waka Nakai, Hideaki Mizuno, Takeshi Baba, Kiyoshi Habu, Noriaki Sawada, Hiroyuki Tsunoda, Takahiro Shima, Kohta Miyawaki, Yoshikane Kikushige, Yasuo Mori, Toshihiro Miyamoto, Takahiro Maeda, and Koichi Akashi

## CANCER BIOLOGY AND TRANSLATIONAL STUDIES

- 1565** **Mechanisms of Resistance to EGFR Inhibition Reveal Metabolic Vulnerabilities in Human GBM**  
Andrew McKinney, Olle R. Lindberg, Jane R. Engler, Katharine Y. Chen, Anupam Kumar, Henry Gong, Kan V. Lu, Erin F. Simonds, Timothy F. Cloughesy, Linda M. Liao, Michael Prados, Andrew W. Bollen, Mitchel S. Berger, Joseph T.C. Shieh, C. David James, Theodore P. Nicolaides, William H. Yong, Albert Lai, Monika E. Hegi, William A. Weiss, and Joanna J. Phillips
- 1577** **Aberrant Expression of ERG Promotes Resistance to Combined PI3K and AR Pathway Inhibition through Maintenance of AR Target Genes**  
Ninghui Mao, Dong Gao, Wenhao Hu, Haley Hieronymus, Shangqian Wang, Young Sun Lee, Cindy Lee, Danielle Choi, Anuradha Gopalan, Yu Chen, and Brett S. Carver

# Table of Contents


- 1587**  **Glutaminase Activity of L-Asparaginase Contributes to Durable Preclinical Activity against Acute Lymphoblastic Leukemia**  
Wai-Kin Chan, Thomas D. Horvath, Lin Tan, Todd Link, Karine G. Harutyunyan, Michael A. Pontikos, Andriy Anishkin, Di Du, Leona A. Martin, Eric Yin, Susan B. Rempe, Sergei Sukharev, Marina Konopleva, John N. Weinstein, and Philip L. Lorenzi
- 1593** **Monomer Preference of EGFR Tyrosine Kinase Inhibitors Influences the Synergistic Efficacy of Combination Therapy with Cetuximab**  
Ayano Oashi, Hiroyuki Yasuda, Keigo Kobayashi, Tetsuo Tani, Junko Hamamoto, Keita Masuzawa, Tadashi Manabe, Hideki Terai, Shinnosuke Ikemura, Ichiro Kawada, Katsuhiko Naoki, and Kenzo Soejima
- 1602** **Cell Death Induced by Cationic Amphiphilic Drugs Depends on Lysosomal Ca<sup>2+</sup> Release and Cyclic AMP**  
Atul Anand, Bin Liu, Jano Dicroce Giacobini, Kenji Maeda, Mikkel Rohde, and Marja Jäättelä
- 1615** **Antileukemia Effects of Notch-Mediated Inhibition of Oncogenic PLK1 in B-Cell Acute Lymphoblastic Leukemia**  
Sankaranarayanan Kannan, Marisa J.L. Aitken, Shelley M. Herbrich, Leonard S. Golfman, Mandy G. Hall, Duncan H. Mak, Jared K. Burks, Guangchun Song, Marina Konopleva, Charles G. Mullighan, Joya Chandra, and Patrick A. Zweidler-McKay
- 1628**  **Analysis of the Genomic Landscape in ALK+ NSCLC Patients Identifies Novel Aberrations Associated with Clinical Outcomes**  
Mathilde Couëtoux du Tertre, Maud Marques, Lise Tremblay, Nicole Bouchard, Razvan Diaconescu, Normand Blais, Christian Couture, Vincent Pelsler, Hangjun Wang, Valerie Higenell, Luisa Izzi, Karen Gambaro, Cyrla Hoffert, Archana Srivastava, Alan Spatz, Caroline Rousseau, Suzan McNamara, Victor Cohen, Gerald Batist, and Jason Agulnik
- 1637** **In Vivo ERK1/2 Reporter Predictively Models Response and Resistance to Combined BRAF and MEK Inhibitors in Melanoma**  
Ileine M. Sanchez, Timothy J. Purwin, Inna Chervoneva, Dan A. Erkes, Mai Q. Nguyen, Michael A. Davies, Katherine L. Nathanson, Kristel Kemper, Daniel S. Peeper, and Andrew E. Aplin
- 1649** **Aggressive Progression in Glioblastoma Cells through Potentiated Activation of Integrin  $\alpha 5\beta 1$  by the Tenascin-C-Derived Peptide TNIIIA2**  
Motomichi Fujita, Tetsuya Yamamoto, Takuya Iyoda, Tatsuya Fujisawa, Manabu Sasada, Reo Nagai, Chikako Kudo, Kazuki Otsuka, Sadahiro Kamiya, Hiroaki Kodama, and Fumio Fukai

## MODELS AND TECHNOLOGIES

- 1659** **An EGFR-Induced *Drosophila* Lung Tumor Model Identifies Alternative Combination Treatments**  
Judith Bossen, Karin Uliczka, Line Steen, Roxana Pfefferkorn, Mandy Mong-Quyen Mai, Lia Burkhardt, Michael Spohn, Iris Bruchhaus, Christine Fink, Holger Heine, and Thomas Roeder

## EDITOR'S NOTE

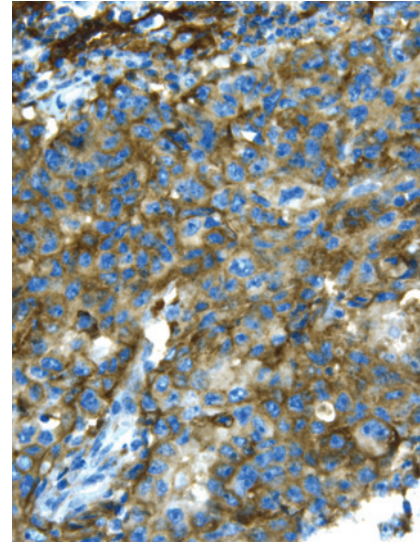
- 1669** **Editor's Note: Regulation of OSU-03012 Toxicity by ER Stress Proteins and ER Stress-Inducing Drugs**  
Laurence Booth, Jane L. Roberts, Nichola Cruickshanks, Steven Grant, Andrew Poklepovic, and Paul Dent

 **AC icon indicates AuthorChoice**  
For more information please visit [www.aacrjournals.org](http://www.aacrjournals.org)

# Table of Contents

## ABOUT THE COVER

In their quest to identify novel targets preferentially expressed on tumors, Merlino and colleagues identified CD205 in multiple cancer models, including breast cancer. In this photomicrograph, the level of CD205 is revealed via immunohistochemistry of breast cancer tissue at 40× magnification. Their first-in-class antibody-drug conjugate was most effective in treating cell line xenografts and patient-derived xenografts of triple-negative breast cancer. Read the whole story on page 1533.



# Molecular Cancer Therapeutics

**18 (9)**

*Mol Cancer Ther* 2019;18:1473-1669.

**Updated version** Access the most recent version of this article at:  
<http://mct.aacrjournals.org/content/18/9>

**E-mail alerts** [Sign up to receive free email-alerts](#) related to this article or journal.

**Reprints and Subscriptions** To order reprints of this article or to subscribe to the journal, contact the AACR Publications Department at [pubs@aacr.org](mailto:pubs@aacr.org).

**Permissions** To request permission to re-use all or part of this article, use this link <http://mct.aacrjournals.org/content/18/9>.  
Click on "Request Permissions" which will take you to the Copyright Clearance Center's (CCC) Rightslink site.