

## Highlights of This Issue 589

## REVIEW

- 591** **Histone Methyltransferase EZH2: A Therapeutic Target for Ovarian Cancer**  
Bayley A. Jones, Sooryanarayana Varambally, and Rebecca C. Arend

## SMALL MOLECULE THERAPEUTICS

- 603** **Afatinib Is a New Therapeutic Approach in Chordoma with a Unique Ability to Target EGFR and Brachyury**  
Paola Magnaghi, Barbara Salom, Liviana Cozzi, Nadia Amboldi, Dario Ballinari, Elena Tamborini, Fabio Gasparri, Alessia Montagnoli, Laura Radrizzani, Alessio Somaschini, Roberta Bosotti, Christian Orrenius, Fabio Bozzi, Silvana Pilotti, Arturo Galvani, Josh Sommer, Silvia Stacchiotti, and Antonella Isacchi
- 614** **Inhibition of FLT3 and PIM Kinases by EC-70124 Exerts Potent Activity in Preclinical Models of Acute Myeloid Leukemia**  
Noelia Puente-Moncada, Paula Costales, Isaac Antolín, Luz-Elena Núñez, Patricia Oro, Maria Ana Herмосilla, Jhudit Pérez-Escuredo, Nicolás Ríos-Lombardía, Ana M. Sanchez-Sanchez, Elisa Luño, Carmen Rodríguez, Vanesa Martín, and Francisco Morís
- 625** **NEO212 Inhibits Migration and Invasion of Glioma Stem Cells**  
Nagore I. Marín-Ramos, Thu Zan Thein, Hee-Yeon Cho, Stephen D. Swenson, Weijun Wang, Axel H. Schönthal, Thomas C. Chen, and Florence M. Hofman

## LARGE MOLECULE THERAPEUTICS

- 638** **An Anti-GDNF Family Receptor Alpha 1 (GFRA1) Antibody–Drug Conjugate for the Treatment of Hormone Receptor–Positive Breast Cancer**  
Sunil Bhakta, Lisa M. Crocker, Yvonne Chen, Meredith Hazen, Melissa M. Schutten, Dongwei Li, Coenraad Kuijl, Rachana Ohri, Fiona Zhong, Kirsten A. Poon, Mary Ann T. Go, Eric Cheng, Robert Piskol, Ron Firestein, Aimee Fourie-O'Donohue, Katherine R. Kozak, Helga Raab, Jo-Anne Hongo, Deepak Sampath, Mark S. Dennis, Richard H. Scheller, Paul Polakis, and Jagath R. Junutula

- 650** **A DNA-Interacting Payload Designed to Eliminate Cross-Linking Improves the Therapeutic Index of Antibody–Drug Conjugates (ADCs)**



Michael L. Miller, Manami Shizuka, Alan Wilhelm, Paulin Salomon, Emily E. Reid, Leanne Lanieri, Surina Sikka, Erin K. Maloney, Lauren Harvey, Qifeng Qiu, Katie E. Archer, Chen Bai, Dilrukshi Vitharana, Luke Harris, Rajeeva Singh, Jose F. Ponte, Nicholas C. Yoder, Yelena Kovtun, Katharine C. Lai, Olga Ab, Jan Pinkas, Thomas A. Keating, and Ravi V.J. Chari

- 661** **Molecularly Targeted Cancer Combination Therapy with Near-Infrared Photoimmunotherapy and Near-Infrared Photorelease with Duocarmycin–Antibody Conjugate**

Tadanobu Nagaya, Alexander P. Gorka, Roger R. Nani, Shuhei Okuyama, Fusa Ogata, Yasuhiro Maruoka, Peter L. Choyke, Martin J. Schnermann, and Hisataka Kobayashi

- 671** **Phase I Dose-Escalation Study of Anti–CTLA-4 Antibody Ipilimumab and Lenalidomide in Patients with Advanced Cancers**

Divya Sakamuri, Isabella C. Glitza, Sonia L. Betancourt Cuellar, Vivek Subbiah, Siqing Fu, Apostolia M. Tsimberidou, Jennifer J. Wheler, David S. Hong, Aung Naing, Gerald S. Falchook, Michelle A. Fanale, Maria E. Cabanillas, and Filip Janku

- 677** **Intratumoral Payload Concentration Correlates with the Activity of Antibody–Drug Conjugates**

Donglu Zhang, Shang-Fan Yu, S. Cyrus Khojasteh, Yong Ma, Thomas H. Pillow, Jack D. Sadowsky, Dian Su, Katherine R. Kozak, Keyang Xu, Andrew G. Polson, Peter S. Dragovich, and Cornelis E.C.A. Hop

## CANCER BIOLOGY AND TRANSLATIONAL STUDIES

- 686** **Scavenger Receptor Type B1 and Lipoprotein Nanoparticle Inhibit Myeloid-Derived Suppressor Cells**  
Michael P. Plebanek, Debayan Bhaumik, Paul J. Bryce, and C. Shad Thaxton

# Table of Contents

**698** Molecular Pharmacodynamics-Guided Scheduling of Biologically Effective Doses: A Drug Development Paradigm Applied to MET Tyrosine Kinase Inhibitors

Apurva K. Srivastava, Melinda G. Hollingshead, Jeevan P. Govindharajulu, Joseph M. Covey, Dane Liston, Melanie A. Simpson, James O. Peggins, Donald P. Bottaro, John J. Wright, Robert J. Kinders, James H. Doroshow, and Ralph E. Parchment

**COMPANION DIAGNOSTIC, PHARMACOGENOMIC, AND CANCER BIOMARKERS**

**710** A Correlative Analysis of PD-L1, PD-1, PD-L2, EGFR, HER2, and HER3 Expression in Oropharyngeal Squamous Cell Carcinoma

Conor E. Steuer, Christopher C. Griffith, Sreenivas Nannapaneni, Mihir R. Patel, Yuan Liu, Kelly R. Magliocca, Mark W. El-Deiry, Cynthia Cohen, Taofeek K. Owonikoko, Dong M. Shin, Zhuo G. Chen, and Nabil F. Saba

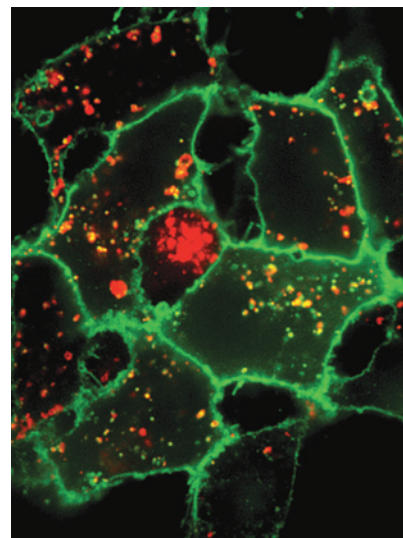


AC icon indicates AuthorChoice

For more information please visit [www.aacrjournals.org](http://www.aacrjournals.org)

## ABOUT THE COVER

Internalization of the antibody against a tumor antigen is one of the key features in developing an antibody-drug conjugate (ADC) therapeutic. Bhakta and colleagues identify GFRA1 as an excellent luminal A breast cancer ADC target. The image depicts the internalization of anti-GFRA1 antibody-Alexa488 conjugate (green) upon binding to HEK293 cells expressing GFRA1 protein. It's co-localization (yellow) with LAMP2, a late endosomal/lysosomal marker (red) is observed. Image Courtesy: Coenraad Kuijl.



# Molecular Cancer Therapeutics

**17 (3)**

*Mol Cancer Ther* 2018;17:589-716.

**Updated version** Access the most recent version of this article at:  
<http://mct.aacrjournals.org/content/17/3>

**E-mail alerts** [Sign up to receive free email-alerts](#) related to this article or journal.

**Reprints and Subscriptions** To order reprints of this article or to subscribe to the journal, contact the AACR Publications Department at [pubs@aacr.org](mailto:pubs@aacr.org).

**Permissions** To request permission to re-use all or part of this article, use this link <http://mct.aacrjournals.org/content/17/3>.  
Click on "Request Permissions" which will take you to the Copyright Clearance Center's (CCC) Rightslink site.