



## Highlights of This Issue 2017

## SMALL MOLECULE THERAPEUTICS

- 2079** Therapeutic Potential of Leelamine, a Novel Inhibitor of Androgen Receptor and Castration-Resistant Prostate Cancer  
Krishna B. Singh, Xinhua Ji, and Shivendra V. Singh
- 2091** Cotargeting the Cell-Intrinsic and Microenvironment Pathways of Prostate Cancer by PI3K $\alpha$ / $\beta$ / $\delta$  Inhibitor BAY1082439  
Yongkang Zou, Zhi Qi, Weilong Guo, Liuzhen Zhang, Marcus Ruscetti, Tanu Shenoy, Ningshu Liu, and Hong Wu
- 2100** Phage Display-Derived Peptide-Based Dual-Modality Imaging Probe for Bladder Cancer Diagnosis and Resection Postinstillation: A Preclinical Study  
 Li Peng, Wenting Shang, Pengyu Guo, Kunshan He, Hongzhi Wang, Ziyu Han, Hongmei Jiang, Jie Tian, Kun Wang, and Wanhai Xu
- 2112** Cabozantinib Exhibits Potent Antitumor Activity in Colorectal Cancer Patient-Derived Tumor Xenograft Models via Autophagy and Signaling Mechanisms  
Aaron J. Scott, John J. Arcaroli, Stacey M. Bagby, Rachel Yahn, Kendra M. Huber, Natalie J. Serkova, Anna Nguyen, Jihye Kim, Andrew Thorburn, Jon Vogel, Kevin S. Quackenbush, Anna Capasso, Anna Schreiber, Patrick Blatchford, Peter J. Klauck, Todd M. Pitts, S. Gail Eckhardt, and Wells A. Messersmith
- 2123** Phyllanthusmin Derivatives Induce Apoptosis and Reduce Tumor Burden in High-Grade Serous Ovarian Cancer by Late-Stage Autophagy Inhibition  
Alexandria N. Young, Denisse Herrera, Andrew C. Huntsman, Melissa A. Korkmaz, Daniel D. Lantvit, Sarmistha Mazumder, Shamalatha Kolli, Christopher C. Coss, Salane King, Hongyan Wang, Steven M. Swanson, A. Douglas Kinghorn, Xiaoli Zhang, Mitch A. Phelps, Leslie N. Aldrich, James R. Fuchs, and Joanna E. Burdette


- 2136** Inhibition of BMI1, a Therapeutic Approach in Endometrial Cancer  
Megan Buechel, Anindya Dey, Shailendra Kumar Dhar Dwivedi, Aleia Crim, Kai Ding, Roy Zhang, Priyabrata Mukherjee, Kathleen N. Moore, Liangxian Cao, Arthur Branstrom, Marla Weetall, John Baird, and Resham Bhattacharya
- 2144** Concurrent HER or PI3K Inhibition Potentiates the Antitumor Effect of the ERK Inhibitor Ulixertinib in Preclinical Pancreatic Cancer Models  
Hongmei Jiang, Mai Xu, Lin Li, Patrick Grierson, Paarth Dodhiawala, Maureen Highkin, Daoxiang Zhang, Qiong Li, Andrea Wang-Gillam, and Kian-Huat Lim
- 2156** Auranofin Enhances Ibrutinib's Anticancer Activity in EGFR-Mutant Lung Adenocarcinoma  
Jing Hu, Huijuan Zhang, Mengru Cao, Li Wang, Shuhong Wu, and Bingliang Fang

## LARGE MOLECULE THERAPEUTICS


- 2164** Development of a Tetravalent Anti-GPA33/Anti-CD3 Bispecific Antibody for Colorectal Cancers  
Zhihao Wu, Hong-Fen Guo, Hong Xu, and Nai-Kong V. Cheung
- 2176** Antitumor Activity of MEDI3726 (ADCT-401), a Pyrrolbenzodiazepine Antibody-Drug Conjugate Targeting PSMA, in Preclinical Models of Prostate Cancer  
 Song Cho, Francesca Zammarchi, David G. Williams, Carin E.G. Havenith, Noel R. Monks, Peter Tyrer, Francois D'Hooge, Ryan Fleming, Kapil Vashisht, Nazzareno Dimasi, Francois Bertelli, Simon Corbett, Lauren Adams, Halla W. Reinert, Sandamali Dissanayake, Charles E. Britten, Wanda King, Karma Dacosta, Ravinder Tammali, Kevin Schifferli, Patrick Strout, Martin Korade III, Mary Jane Masson Hinrichs, Simon Chivers, Eva Corey, He Liu, Sae Kim, Neil H. Bander, Philip W. Howard, John A. Hartley, Steve Coats, David A. Tice, Ronald Herbst, and Patrick H. van Berkel

# Table of Contents

## CANCER BIOLOGY AND TRANSLATIONAL STUDIES

- 2187** A Chemosensitivity Study of Colorectal Cancer Using Xenografts of Patient-Derived Tumor-Initiating Cells  
Hisatsugu Maekawa, Hiroyuki Miyoshi, Tadayoshi Yamaura, Yoshiro Itatani, Kenji Kawada, Yoshiharu Sakai, and M. Mark Taketo
- 2197** Intra versus Inter Cross-resistance Determines Treatment Sequence between Taxane and AR-Targeting Therapies in Advanced Prostate Cancer  
Alan P. Lombard, Liangren Liu, Vito Cucchiara, Chengfei Liu, Cameron M. Armstrong, Ruining Zhao, Joy C. Yang, Wei Lou, Christopher P. Evans, and Allen C. Gao
- 2206** Inhibition of Parp1 by BMN673 Effectively Sensitizes Cells to Radiotherapy by Upsetting the Balance of Repair Pathways Processing DNA Double-Strand Breaks  
Aashish Soni, Fanghua Li, You Wang, Martha Grabos, Lisa Marie Krieger, Shipra Chaudhary, Mohammad Sharif Mortoga Hasan, Mansoor Ahmed, C. Norman Coleman, Beverly A. Teicher, Richard L. Piekarz, Dian Wang, and George E. Iliakis
- 2217** Acquired JHDM1D–BRAF Fusion Confers Resistance to FGFR Inhibition in *FGFR2*-Amplified Gastric Cancer  
Hitoshi Sase, Yoshito Nakanishi, Satoshi Aida, Kana Horiguchi-Takei, Nukinori Akiyama, Toshihiko Fujii, Kiyooki Sakata, Toshiyuki Mio, Masahiro Aoki, and Nobuya Ishii
- 2226** Hexosamine Biosynthetic Pathway Inhibition Leads to AML Cell Differentiation and Cell Death  
 Abhishek Asthana, Parameswaran Ramakrishnan, Yorlenny Vicioso, Keman Zhang, and Reshmi Parameswaran

## COMPANION DIAGNOSTIC, PHARMACOGENOMIC, AND CANCER BIOMARKERS

- 2238** Targeted Sequencing of Circulating Tumor DNA to Monitor Genetic Variants and Therapeutic Response in Metastatic Colorectal Cancer  
Hung-Chih Hsu, Nina Lapke, Chuang-Wei Wang, Pei-Yi Lin, Jeng Fu You, Chien Yuh Yeh, Wen-Sy Tsai, Hsin Yuan Hung, Sum-Fu Chiang, Hua-Chien Chen, Shu-Jen Chen, An Hsu, and Tsai Sheng Yang
- 2248**  Modulation of Circulating Protein Biomarkers in Cancer Patients Receiving Bevacizumab and the Anti-Endoglin Antibody, TRC105  
Yingmiao Liu, Mark D. Starr, John C. Brady, Christel Rushing, Herbert Pang, Bonne Adams, Delia Alvarez, Charles P. Theuer, Herbert I. Hurwitz, and Andrew B. Nixon
- 2257** CD44 Facilitates Epithelial-to-Mesenchymal Transition Phenotypic Change at Acquisition of Resistance to EGFR Kinase Inhibitors in Lung Cancer  
Kenichi Suda, Isao Murakami, Hui Yu, Jihye Kim, Aik-Choon Tan, Hiroshi Mizuuchi, Leslie Rozeboom, Kim Ellison, Christopher J. Rivard, Tetsuya Mitsudomi, and Fred R. Hirsch

## RETRACTIONS

- 2266** Retraction: Apoptosis-Inducing Effect of Erlotinib Is Potentiated by 3,3'-Diindolylmethane *In Vitro* and *In Vivo* Using an Orthotopic Model of Pancreatic Cancer
- 2267** Retraction: Therapeutic Intervention of Experimental Breast Cancer Bone Metastasis by Indole-3-carbinol in SCID-human Mouse Model
- 2268** Retraction: Downregulation of Notch-1 Contributes to Cell Growth Inhibition and Apoptosis in Pancreatic Cancer Cells



AC icon indicates AuthorChoice

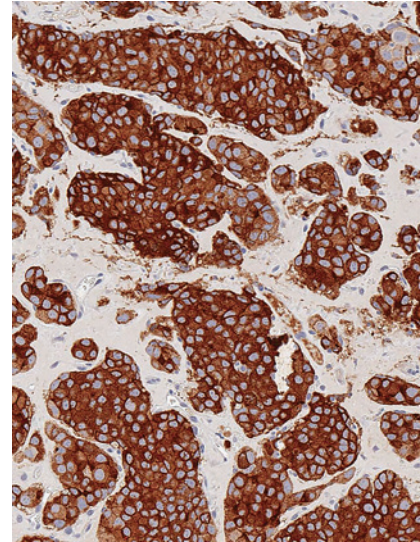
For more information please visit [www.aacrjournals.org](http://www.aacrjournals.org)



# Table of Contents

## ABOUT THE COVER

Antibody–drug conjugates (ADC) are a new class of therapeutics that combine the high specificity and affinity of antibodies to the strong cytotoxic activity of small molecules. Prostate-specific membrane antigen (PSMA) is a well-characterized tumor-associated antigen for prostate cancer. The image shows homogeneous and strongly positive PSMA staining, as determined by immunohistochemistry, in the LNCaP prostate cancer xenograft. Cho, Zammarchi, and colleagues demonstrate that MEDI3726, a PBD-based PSMA-targeting ADC currently in a phase I clinical trial, has potent and specific cytotoxicity in a panel of PSMA-positive prostate cancer cell lines and robust and durable antitumor activity against prostate cancer cell line xenografts and patient–derived xenograft models.



# Molecular Cancer Therapeutics

**17 (10)**

*Mol Cancer Ther* 2018;17:2077-2268.

**Updated version** Access the most recent version of this article at:  
<http://mct.aacrjournals.org/content/17/10>

**E-mail alerts** [Sign up to receive free email-alerts](#) related to this article or journal.

**Reprints and Subscriptions** To order reprints of this article or to subscribe to the journal, contact the AACR Publications Department at [pubs@aacr.org](mailto:pubs@aacr.org).

**Permissions** To request permission to re-use all or part of this article, use this link <http://mct.aacrjournals.org/content/17/10>.  
Click on "Request Permissions" which will take you to the Copyright Clearance Center's (CCC) Rightslink site.