

Highlights of This Issue 2409
SMALL MOLECULE THERAPEUTICS

- 2411** Targeting Ribonucleotide Reductase M2 and NF- κ B Activation with Didox to Circumvent Tamoxifen Resistance in Breast Cancer
Khyati N. Shah, Elizabeth A. Wilson, Ritu Malla, Howard L. Elford, and Jesika S. Faridi
- 2422** HSP90 Inhibitor–SN-38 Conjugate Strategy for Targeted Delivery of Topoisomerase I Inhibitor to Tumors
 David A. Proia, Donald L. Smith, Junyi Zhang, John-Paul Jimenez, Jim Sang, Luisa Shin Ogawa, Manuel Sequeira, Jaime Acquaviva, Suqin He, Chaohua Zhang, Vladimir Khazak, Igor Astsaturov, Takayo Inoue, Noriaki Tatsuta, Sami Osman, Richard C. Bates, Dinesh Chimmanamada, and Weiwen Ying
- 2433** Inhibition of ABCB1 Overcomes Cancer Stem Cell-like Properties and Acquired Resistance to MET Inhibitors in Non-Small Cell Lung Cancer
Teppe Sugano, Masahiro Seike, Rintaro Noro, Chie Soeno, Mika Chiba, Fenfei Zou, Shinji Nakamichi, Nobuhiko Nishijima, Masaru Matsumoto, Akihiko Miyanaga, Kaoru Kubota, and Akihiko Gemma
- 2441** Tumors with AKT1^{E17K} Mutations Are Rational Targets for Single Agent or Combination Therapy with AKT Inhibitors
 Barry R. Davies, Nin Guan, Armelle Logie, Claire Crafter, Lyndsey Hanson, Vivien Jacobs, Neil James, Philippa Dudley, Kelly Jacques, Brendon Ladd, Celina M. D'Cruz, Michael Zinda, Justin Lindemann, Makoto Kodaira, Kenji Tamura, and Emma L. Jenkins
- 2452** Sarcoma Cell Line Screen of Oncology Drugs and Investigational Agents Identifies Patterns Associated with Gene and microRNA Expression
 Beverly A. Teicher, Eric Polley, Mark Kunkel, David Evans, Thomas Silvers, Rene Delosh, Julie Laudeman, Chad Ogle, Russell Reinhart, Michael Selby, John Connelly, Erik Harris, Anne Monks, and Joel Morris
- 2463** A Novel Eg5 Inhibitor (LY2523355) Causes Mitotic Arrest and Apoptosis in Cancer Cells and Shows Potent Antitumor Activity in Xenograft Tumor Models
Xiang S. Ye, Li Fan, Robert D. Van Horn, Ryuichiro Nakai, Yoshihisa Ohta, Shiro Akinaga, Chikara Murakata, Yoshinori Yamashita, Tinggui Yin, Kelly M. Credille, Gregory P. Donoho, Farhana F. Merzoug, Heng Li, Amit Aggarwal, Kerry Blanchard, and Eric H. Westin
- 2473** CXCR4 Protein Epitope Mimetic Antagonist POL5551 Disrupts Metastasis and Enhances Chemotherapy Effect in Triple-Negative Breast Cancer
Jingyu Xiang, Michelle A. Hurchla, Francesca Fontana, Xinming Su, Sarah R. Amend, Alison K. Esser, Garry J. Douglas, Chidananda Mudalagiriappa, Kathryn E. Luker, Timothy Pluard, Foluso O. Ademuyiwa, Barbara Romagnoli, Gérald Tuffin, Eric Chevalier, Gary D. Luker, Michael Bauer, Johann Zimmermann, Rebecca L. Aft, Klaus Dembowski, and Katherine N. Weilbaecher
- 2486** A Novel Inhibitor of AKT1–PDPK1 Interaction Efficiently Suppresses the Activity of AKT Pathway and Restricts Tumor Growth *In Vivo*
Kristina Mäemets-Allas, Janeli Viil, and Viljar Jaks
- 2497** Identification of Novel Ezrin Inhibitors Targeting Metastatic Osteosarcoma by Screening Open Access Malaria Box
Haydar Çelik, Sung-Hyeok Hong, Daisy D. Colón-López, Jenny Han, Yasemin Saygideger Kont, Tsion Z. Minas, Matthew Swift, Mikell Paige, Eric Glasgow, Jeffrey A. Toretsky, Jürgen Bosch, and Aykut Üren
- 2508** AZD2014, an Inhibitor of mTORC1 and mTORC2, Is Highly Effective in ER⁺ Breast Cancer When Administered Using Intermittent or Continuous Schedules
 Sylvie M. Guichard, Jon Curwen, Teeru Bihani, Celina M. D'Cruz, James W.T. Yates, Michael Grondine, Zoe Howard, Barry R. Davies, Graham Bigley, Teresa Klinowska, Kurt G. Pike, Martin Pass, Christine M. Chresta, Urszula M. Polanska, Robert McEwen, Oona Delpuech, Stephen Green, and Sabina C. Cosulich

Table of Contents

- 2519** Dual HER2/PIK3CA Targeting Overcomes Single-Agent Acquired Resistance in HER2-Amplified Uterine Serous Carcinoma Cell Lines *In Vitro* and *In Vivo*
Salvatore Lopez, Emiliano Cocco, Jonathan Black, Stefania Bellone, Elena Bonazzoli, Federica Predolini, Francesca Ferrari, Carlton L. Schwab, Diana P. English, Elena Ratner, Dan-Arin Silasi, Masoud Azodi, Peter E. Schwartz, Corrado Terranova, Roberto Angioli, and Alessandro D. Santin
- 2527**  Effective Inhibition of Bone Morphogenetic Protein Function by Highly Specific Llama-Derived Antibodies
Silvia Calpe, Koen Wagner, Mohamed El Khattabi, Lucy Rutten, Cheryl Zimmerlin, Edward Dolk, C. Theo Verrips, Jan Paul Medema, Hergen Spits, and Kausilia K. Krishnadath
- 2541** Targeting G-Quadruplex DNA Structures by EMICORON Has a Strong Antitumor Efficacy against Advanced Models of Human Colon Cancer
Manuela Porru, Simona Artuso, Erica Salvati, Armandodoriano Bianco, Marco Franceschin, Maria Grazia Diodoro, Daniela Passeri, Augusto Orlandi, Francesco Savorani, Maurizio D'Incalci, Annamaria Biroccio, and Carlo Leonetti
- 2552** Single-Molecule Supercoil Relaxation Assay as a Screening Tool to Determine the Mechanism and Efficacy of Human Topoisomerase IB Inhibitors
Yeonee Seol, Hongliang Zhang, Keli Agama, Nicholas Lorence, Yves Pommier, and Keir C. Neuman
- 2560** Poly-ADP-Ribose Polymerase as a Therapeutic Target in Pediatric Diffuse Intrinsic Pontine Glioma and Pediatric High-Grade Astrocytoma
Yevgen Chornenkyy, Sameer Agnihotri, Man Yu, Pawel Buczkowicz, Patricia Rakopoulos, Brian Golbourn, Livia Garzia, Robert Siddaway, Stephie Leung, James T. Rutka, Michael D. Taylor, Peter B. Dirks, and Cynthia Hawkins
- 2569** A Phase I Study of the SMAC-Mimetic Birinapant in Adults with Refractory Solid Tumors or Lymphoma
Ravi K. Amaravadi, Russell J. Schilder, Lainie P. Martin, Myron Levin, Martin A. Graham, David E. Weng, and Alex A. Adjei
- 2576** Specific CP110 Phosphorylation Sites Mediate Anaphase Catastrophe after CDK2 Inhibition: Evidence for Cooperation with USP33 Knockdown
Shanhu Hu, Yun Lu, Bernardo Orr, Kristina Godek, Lisa Maria Mustachio, Masanori Kawakami, David Sekula, Duane A. Compton, Sarah Freemantle, and Ethan Dmitrovsky
- 2586** Antiandrogen Therapy with Hydroxyflutamide or Androgen Receptor Degradation Enhancer ASC-J9 Enhances BCG Efficacy to Better Suppress Bladder Cancer Progression
Zhiqun Shang, Yanjun Li, Minghao Zhang, Jing Tian, Ruifa Han, Chih-Rong Shyr, Edward Messing, Shuyuan Yeh, Yuanjie Niu, and Chawnshang Chang
- ## LARGE MOLECULE THERAPEUTICS
- 2595** Neutralization of KIT Oncogenic Signaling in Leukemia with Antibodies Targeting KIT Membrane Proximal Domain 5
Marianne Le Gall, Ronan Crépin, Madeline Neiveyans, Christian Auclair, Yongfeng Fan, Yu Zhou, James D. Marks, André Pèlerin, and Marie-Alix Poul
- 2606** Antibody Format and Drug Release Rate Determine the Therapeutic Activity of Noninternalizing Antibody–Drug Conjugates
Rémy Gébleux, Sarah Wulhfard, Giulio Casi, and Dario Neri
- ## CANCER BIOLOGY AND SIGNAL TRANSDUCTION
- 2613** Targeting FGFR Pathway in Human Hepatocellular Carcinoma: Expressing pFGFR and pMET for Antitumor Activity
Jae-Cheol Jo, Eun Kyoung Choi, Jae-Sik Shin, Jae-Hee Moon, Seung-Woo Hong, Ha-Reum Lee, Seung-Mi Kim, Soo-A Jung, Dae-Hee Lee, Seang Hwan Jung, Sun-Hye Lee, Jeong Eun Kim, Kyu-pyo Kim, Yong Sang Hong, Young-Ah Suh, Se Jin Jang, Eun Kyung Choi, Jung Shin Lee, Dong-Hoon Jin, and Tae Won Kim
- 2623** HMDB and 5-AzadC Combination Reverses Tumor Suppressor CCAAT/Enhancer-Binding Protein Delta to Strengthen the Death of Liver Cancer Cells
Chien-Feng Li, Hsin-Hwa Tsai, Chiung-Yuan Ko, Yen-Chun Pan, Chia-Jui Yen, Hong-Yue Lai, Chiou-Hwa Yuh, Wan-Chen Wu, and Ju-Ming Wang

Table of Contents

2634 Tumor MET Expression and Gene Amplification in Chinese Patients with Locally Advanced or Metastatic Gastric or Gastroesophageal Junction Cancer
Zhi Peng, Zhongwu Li, Jing Gao, Ming Lu, Jifang Gong, En-Tzu Tang, Kelly S. Oliner, Yong-Jiang Hei, Hui Zhou, and Lin Shen

2642 Seribantumab, an Anti-ERBB3 Antibody, Delays the Onset of Resistance and Restores Sensitivity to Letrozole in an Estrogen Receptor-Positive Breast Cancer Model
Michael D. Curley, Gauri J. Sabnis, Lucia Wille, Bambang S. Adiwijaya, Gabriela Garcia, Victor Moyo, Armina A. Kazi, Angela Brodie, and Gavin MacBeath

COMPANION DIAGNOSTICS AND CANCER BIOMARKERS

2653 MiRNA-203 Reduces Nasopharyngeal Carcinoma Radioresistance by Targeting IL8/AKT Signaling
Jia-Quan Qu, Hong-Mei Yi, Xu Ye, Jin-Feng Zhu, Hong Yi, Li-Na Li, Ta Xiao, Li Yuan, Jiao-Yang Li, Yuan-Yuan Wang, Juan Feng, Qiu-Yan He, Shan-Shan Lu, and Zhi-Qiang Xiao

MODELS AND TECHNOLOGIES

2665 A Novel Fully Humanized 3D Skin Equivalent to Model Early Melanoma Invasion
David S. Hill, Neil D.P. Robinson, Matthew P. Caley, Mei Chen, Edel A. O'Toole, Jane L. Armstrong, Stefan Przyborski, and Penny E. Lovat

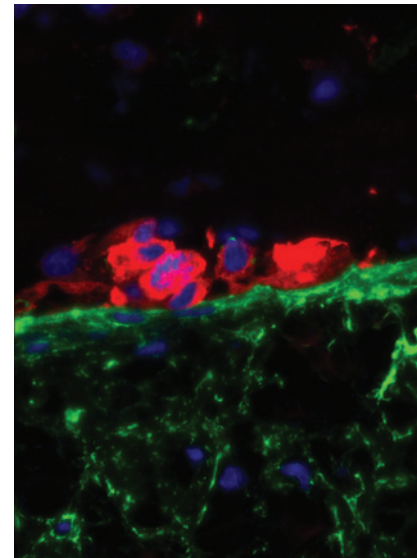


AC icon indicates Author Choice

For more information please visit www.aacrjournals.org

ABOUT THE COVER

Early-stage cutaneous melanoma development is characterized by uncontrolled proliferation and invasion of melanoma cells from the epidermis into the dermis through the basement membrane. This process is modeled using a novel full-thickness human melanoma skin equivalent in which melanoma cells form nests at the epidermal/dermal junction, as seen in this image, the basement membrane component type IV collagen, before disrupting the basement membrane structure as they invade at later time points. For full details of this model and its use for the investigation of early melanoma invasion, see the article by Hill and colleagues on page 2665.



Molecular Cancer Therapeutics

14 (11)

Mol Cancer Ther 2015;14:2409-2673.

Updated version Access the most recent version of this article at:
<http://mct.aacrjournals.org/content/14/11>

E-mail alerts [Sign up to receive free email-alerts](#) related to this article or journal.

Reprints and Subscriptions To order reprints of this article or to subscribe to the journal, contact the AACR Publications Department at pubs@aacr.org.

Permissions To request permission to re-use all or part of this article, use this link <http://mct.aacrjournals.org/content/14/11>.
Click on "Request Permissions" which will take you to the Copyright Clearance Center's (CCC) Rightslink site.