

Highlights of This Issue 2139

REVIEW

- 2141 Axl Kinase as a Key Target for Oncology: Focus on Small Molecule Inhibitors**
 Clémence Feneayrolles, Aurélie Spenlinhauer, Léa Guiet, Bénédicte Fauvel, Bénédicte Daydé-Cazals, Pierre Warnault, Gwénaél Chevé, and Aziz Yasri

SMALL MOLECULE THERAPEUTICS

- 2149 Direct Inhibition of Choline Kinase by a Near-Infrared Fluorescent Carbocyanine**
 Sean P. Arlauckas, Anatoliy V. Popov, and Edward J. Delikatny
- 2159 Selective Release of a Cycloamine Glucuronide Prodrug toward Stem-like Cancer Cell Inhibition in Glioblastoma**
 Anaïs Balbous, Brigitte Renoux, Ulrich Cortes, Serge Milin, Karline Guilloteau, Thibaut Legigan, Pierre Rivet, Odile Boissonnade, Sébastien Martin, Caroline Tripiana, Michel Wager, René Jean Bensadoun, Sébastien Papot, and Lucie Karayan-Tapon
- 2170 Translational Exposure–Efficacy Modeling to Optimize the Dose and Schedule of Taxanes Combined with the Investigational Aurora A Kinase Inhibitor MLN8237 (Alisertib)**
 Jessica J. Huck, Mengkun Zhang, Jerome Mettetal, Arijit Chakravarty, Karthik Venkatakrishnan, Xiaofei Zhou, Rob Kleinfeld, Marc L. Hyer, Karupiah Kannan, Vaishali Shinde, Andy Dorner, Mark G. Manfredi, Wen Chyi Shyu, and Jeffrey A. Ecsedy
- 2184 Antiproliferative Effects of CDK4/6 Inhibition in CDK4-Amplified Human Liposarcoma *In Vitro* and *In Vivo***
 Yi-Xiang Zhang, Ewa Sicinska, Jeffrey T. Czaplinski, Stephen P. Remillard, Samuel Moss, Yuchuan Wang, Christopher Brain, Alice Loo, Eric L. Snyder, George D. Demetri, Sunkyu Kim, Andrew L. Kung, and Andrew J. Wagner

LARGE MOLECULE THERAPEUTICS

- 2194 EpCAM-Selective Elimination of Carcinoma Cells by a Novel MAP-Based Cytolytic Fusion Protein**
 Dmitrij Hristodorov, Manal Amoury, Radoslav Mladenov, Judith Niesen, Katharina Arens, Nina Berges, Lea Hein, Stefano Di Fiore, Anh-Tuan Pham, Michael Huhn, Wijnand Helfrich, Rainer Fischer, Theo Thepen, and Stefan Barth

CANCER BIOLOGY AND SIGNAL TRANSDUCTION

- 2203 Quinacrine Overcomes Resistance to Erlotinib by Inhibiting FACT, NF- κ B, and Cell-Cycle Progression in Non-Small Cell Lung Cancer**
 Josephine Kam Tai Dermawan, Katerina Gurova, John Pink, Afshin Dowlati, Sarmishtha De, Goutham Narla, Neelesh Sharma, and George R. Stark

COMPANION DIAGNOSTICS AND CANCER BIOMARKERS

- 2215 Activation of Nrf2 Pathways Correlates with Resistance of NSCLC Cell Lines to CBP501 *In Vitro***
 Naoki Mine, Sayaka Yamamoto, Donald W. Kufe, Daniel D. Von Hoff, and Takumi Kawabe
- 2226 Pharmacogenetic Predictors of Outcome in Patients with Stage II and III Colon Cancer Treated with Oxaliplatin and Fluoropyrimidine-Based Adjuvant Chemotherapy**
 Ana Custodio, Juan Moreno-Rubio, Jorge Aparicio, Javier Gallego-Plazas, Ricardo Yaya, Joan Maurel, Nuria Rodríguez-Salas, Emilio Burgos, David Ramos, Ana Calatrava, Encarna Andrada, Esther Díaz-López, Antonio Sánchez, Rosario Madero, Paloma Cejas, and Jaime Feliu
- 2238 Epidermal Growth Factor-like Domain 7 Predicts Response to First-Line Chemotherapy and Bevacizumab in Patients with Metastatic Colorectal Cancer**
 Torben Frøstrup Hansen, Boye Schnack Nielsen, Flemming Brandt Sørensen, Anders Johnsson, and Anders Jakobsen

Table of Contents

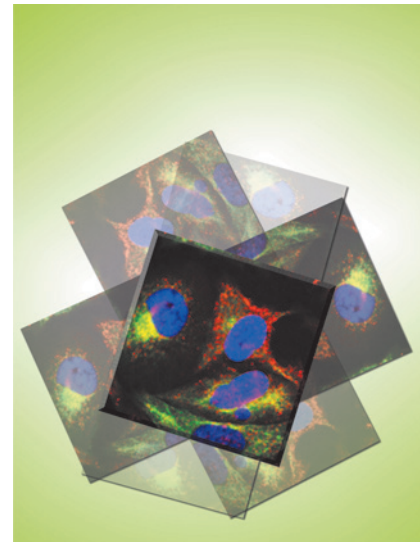
CORRECTIONS

- 2246** Correction: Birinapant (TL32711), a Bivalent SMAC Mimetic, Targets TRAF2-Associated cIAPs, Abrogates TNF-Induced NF- κ B Activation, and Is Active in Patient-Derived Xenograft Models
- 2248** Correction: Driven to Death: Inhibition of Farnesylation Increases Ras Activity in Osteosarcoma and Promotes Growth Arrest and Cell Death

- 2250** Correction: The Phosphoinositide 3-Kinase α Selective Inhibitor BYL719 Enhances the Effect of the Protein Kinase C Inhibitor AEB071 in GNAQ/GNA11-Mutant Uveal Melanoma Cells

ABOUT THE COVER

To elucidate the potential mode of action of MAP-based cytolytic fusion proteins in living cells, colocalization assays were performed using EGFR⁺ A549 cells transfected with a SNAP-tagged tubulin DNA construct. Expressed SNAP-tagged tubulin molecules were labeled with SNAP-Cell TMR-Star (green). EGF-MAP_{f151} was used as a representative for MAP-based CFPs. MAP_{f151} was detected using mouse-anti-human Tau and goat-anti-mouse Alexa Fluor 647 antibodies (red). DAPI was used to counterstain the nucleus (blue). Using confocal fluorescence microscopy and a tubulin polymerization assay, it could be shown that MAP colocalized with and stabilized microtubules. For more details, see article by Hristodorov and colleagues on page 2194.



Molecular Cancer Therapeutics

13 (9)

Mol Cancer Ther 2014;13:2139-2250.

Updated version Access the most recent version of this article at:
<http://mct.aacrjournals.org/content/13/9>

E-mail alerts [Sign up to receive free email-alerts](#) related to this article or journal.

Reprints and Subscriptions To order reprints of this article or to subscribe to the journal, contact the AACR Publications Department at pubs@aacr.org.

Permissions To request permission to re-use all or part of this article, use this link <http://mct.aacrjournals.org/content/13/9>. Click on "Request Permissions" which will take you to the Copyright Clearance Center's (CCC) Rightslink site.