

Highlights of This Issue 1

SPOTLIGHT ON CLINICAL RESPONSE

- 3 | **Personalizing Cancer Treatment in the Age of Global Genomic Analyses: *PALB2* Gene Mutations and the Response to DNA Damaging Agents in Pancreatic Cancer**

Maria C. Villarroel, N.V. Rajeshkumar, Ignacio Garrido-Laguna, Ana De Jesus-Acosta, Siân Jones, Anirban Maitra, Ralph H. Hruban, James R. Eshleman, Alison Klein, Daniel Laheru, Ross Donehower, and Manuel Hidalgo

REVIEW

- 9 | **Notch Signaling Pathway as a Therapeutic Target in Breast Cancer**

Hamed Al-Hussaini, Deepa Subramanyam, Michael Reedijk, and Srikala S. Sridhar

THERAPEUTIC DISCOVERY

- 16 | **Glutathione-Conjugate Transport by RLIP76 Is Required for Clathrin-Dependent Endocytosis and Chemical Carcinogenesis**

Sharad S. Singhal, Dilki Wickramarachchi, Sushma Yadav, Jyotsana Singhal, Kathryn Leake, Rit Vatsyayan, Pankaj Chaudhary, Poorna Lelsani, Sumihiro Suzuki, Shaohua Yang, Yogesh C. Awasthi, and Sanjay Awasthi

- 29 | **Targeting Tyrosine Phosphorylation of PCNA Inhibits Prostate Cancer Growth**

Huajun Zhao, Yuan-Hung Lo, Li Ma, Susan E. Waltz, Jerilyn K. Gray, Mien-Chie Hung, and Shao-Chun Wang

- 37 | **Cell-Penetrating TAT-FOXO3 Fusion Proteins Induce Apoptotic Cell Death in Leukemic Cells**

Makram Essafi, Alice A. Baudot, Xavier Mouska, Jill-Patrice Cassuto, Michel Ticchioni, and Marcel Deckert

- 47 | **Prediction of Colorectal Cancer Relapse and Prognosis by Tissue mRNA Levels of *NDRG2***

Dake Chu, Zixi Zhang, Yunming Li, Lin Wu, Jing Zhang, Weizhong Wang, and Jian Zhang

- 57 | **Pancratistatin Selectively Targets Cancer Cell Mitochondria and Reduces Growth of Human Colon Tumor Xenografts**

Carly Griffin, Aditya Karnik, James McNulty, and Siyaram Pandey

- 69 | **A Small-Molecule Inhibitor of MDMX Activates p53 and Induces Apoptosis**

Hongbo Wang, Xujun Ma, Shumei Ren, John K. Buolamwini, and Chunhong Yan

- 80 | **Therapeutic Targeting the Loss of the Birt-Hogg-Dubé Suppressor Gene**

Xiaohong Lu, Wenbin Wei, Janine Fenton, Michael S. Nahorski, Erzsebet Rabai, Anne Reiman, Laurence Seabra, Zsuzsanna Nagy, Farida Latif, and Eamonn R. Maher

PRECLINICAL DEVELOPMENT

- 90 | **A Combined Preclinical Therapy of Cannabinoids and Temozolomide against Glioma**

Sofía Torres, Mar Lorente, Fátima Rodríguez-Fornés, Sonia Hernández-Tiedra, María Salazar, Elena García-Taboada, Juan Barcia, Manuel Guzmán, and Guillermo Velasco

- 104 | **Chemopreventive and Chemotherapeutic Effects of Intravesical Silibinin against Bladder Cancer by Acting on Mitochondria**

Jin Zeng, Yi Sun, Kaijie Wu, Lei Li, Gang Zhang, Zenglei Yang, Zhiqiang Wang, Dong Zhang, Yan Xue, Yule Chen, Guodong Zhu, Xinyang Wang, and Dalin He

- 117 | **Drug Efflux by Breast Cancer Resistance Protein Is a Mechanism of Resistance to the Benzimidazole Insulin-Like Growth Factor Receptor/Insulin Receptor Inhibitor, BMS-536924**

Xiaonan Hou, Fei Huang, Joan M. Carboni, Karen Flatten, Yan W. Asmann, Cynthia Ten Eyck, Takeo Nakanishi, Jennifer D. Tibodeau, Douglas D. Ross, Marco M. Gottardis, Charles Erlichman, Scott H. Kaufmann, and Paul Haluska

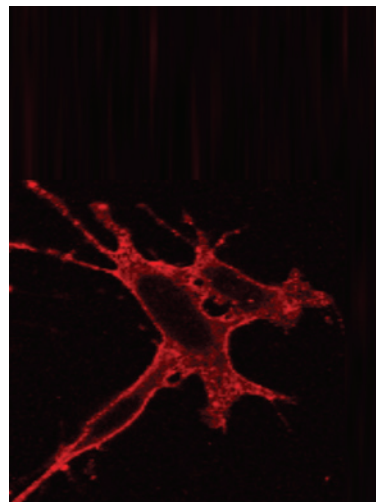
- 126 | **ENMD-2076 Is an Orally Active Kinase Inhibitor with Antiangiogenic and Antiproliferative Mechanisms of Action**
Graham C. Fletcher, Richard D. Brokx, Trisha A. Denny, Todd A. Hembrough, Stacy M. Plum, William E. Fogler, Carolyn F. Sidor, and Mark R. Bray
- 138 | **Celecoxib Can Induce Vascular Endothelial Growth Factor Expression and Tumor Angiogenesis**
Kaiming Xu, Huiying Gao, and Hui-Kuo G. Shu
- 148 | **Luteinizing Hormone-Releasing Hormone (LHRH)-I Antagonist Cetrorelix Inhibits Myeloma Cell Growth *In vitro* and *In vivo***
Jianguo Wen, Yongdong Feng, Chad C. Bjorklund, Michael Wang, Robert Z. Orlowski, Zheng-Zheng Shi, Bing Liao, Jacqueline O'Hare, Youli Zu, Andrew V. Schally, and Chung-Che Chang
- 159 | **MEK/ERK Inhibitor U0126 Increases the Radiosensitivity of Rhabdomyosarcoma Cells *In vitro* and *In vivo* by Downregulating Growth and DNA Repair Signals**
Francesco Marampon, Giovanni Luca Gravina, Agnese Di Rocco, Pierluigi Bonfili, Mario Di Staso, Caterina Fardella, Lorella Polidoro, Carmela Ciccarelli, Claudio Festuccia, Vladimir M. Popov, Richard G. Pestell, Vincenzo Tombolini, and Bianca Maria Zani
- 169 | **Sorafenib Inhibits the Hepatocyte Growth Factor-Mediated Epithelial Mesenchymal Transition in Hepatocellular Carcinoma**
Tomoyuki Nagai, Tokuzo Arao, Kazuyuki Furuta, Kazuko Sakai, Kanae Kudo, Hiroyasu Kaneda, Daisuke Tamura, Keiichi Aomatsu, Hideharu Kimura, Yoshihiko Fujita, Kazuko Matsumoto, Nagahiro Saijo, Masatoshi Kudo, and Kazuto Nishio
- 178 | **Preclinical Studies on the Mechanism of Action and the Anti-Lymphoma Activity of the Novel Anti-CD20 Antibody GA101**
Stephane Dalle, Lina Reslan, Timothee Besseyre de Horts, Stephanie Herveau, Frank Herting, Adriana Plesa, Thomas Friess, Pablo Umana, Christian Klein, and Charles Dumontet
- 186 | **Lysophosphatidylcholine Pretreatment Reduces VLA-4 and P-Selectin-Mediated B16.F10 Melanoma Cell Adhesion *In vitro* and Inhibits Metastasis-Like Lung Invasion *In vivo***
Peter Jantschkeff, Martin Schlesinger, Juliane Fritzsche, Lenka A. Taylor, Ralph Graeser, Gregor Kirfel, Dieter O. Fürst, Ulrich Massing, and Gerd Bendas
- 198 | **Bortezomib Sensitizes Malignant Human Glioma Cells to TRAIL, Mediated by Inhibition of the NF- κ B Signaling Pathway**
Esther P. Jane, Daniel R. Premkumar, and Ian F. Pollack

MOLECULAR MEDICINE IN PRACTICE

- 209 | **Effects of Patupilone on the Pharmacokinetics and Pharmacodynamics of Warfarin in Patients with Advanced Malignancies: A Phase 1 Clinical Trial**
Apostolia-Maria Tsimberidou, Chris H.M. Takimoto, Stacy Moulder, Cynthia Uehara, Monica Mita, Alain Mita, Patrick Urban, Eugene Tan, Yanfeng Wang, David Vining, and Razelle Kurzrock

ABOUT THE COVER

RLIP76 is a glutathione-conjugate transporter that is overexpressed in many cancers and involved in oxidative stress response. Cellular oxidative-stress and clathrin-dependent endocytosis (CDE) are involved in the transcriptional reprogramming that regulates carcinogenesis. Targeted depletion of RLIP76 causes sustained regression of human xenografts of various cancers without any overt toxicity in mice. In this regard, Singhal and colleagues studies revealed that CDE of EGF-rhodamine was markedly deficient in RLIP76 knockout MEF, whereas phorbol ester and benzo[a]pyrene were ineffective in causing neoplasia in RLIP76 knockout mice. For details, please see article by Singhal and colleagues on page 16.



Molecular Cancer Therapeutics

10 (1)

Mol Cancer Ther 2011;10:1-217.

Updated version Access the most recent version of this article at:
<http://mct.aacrjournals.org/content/10/1>

E-mail alerts [Sign up to receive free email-alerts](#) related to this article or journal.

Reprints and Subscriptions To order reprints of this article or to subscribe to the journal, contact the AACR Publications Department at pubs@aacr.org.

Permissions To request permission to re-use all or part of this article, use this link <http://mct.aacrjournals.org/content/10/1>. Click on "Request Permissions" which will take you to the Copyright Clearance Center's (CCC) Rightslink site.